

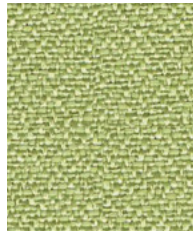
Lucia

camira

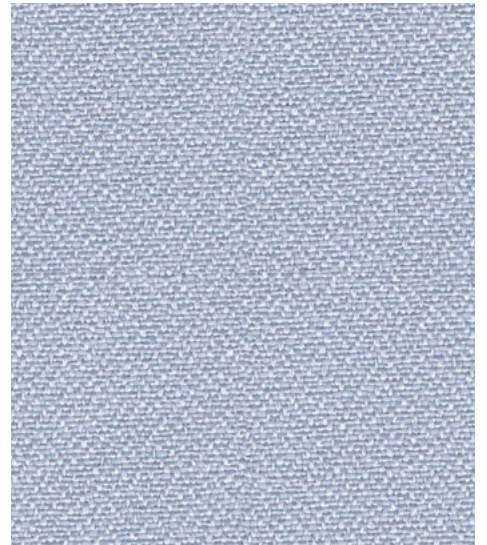
Photographic fabric scans are not color accurate. Always request actual fabric samples before ordering.



Adobo
YB165



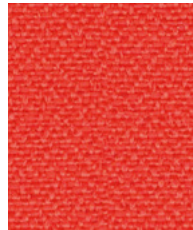
Apple
YB096



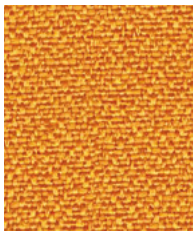
Rum
YB086



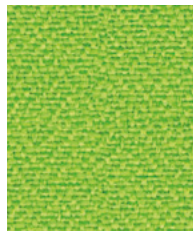
Aruba
YB093



Tortuga
YB168



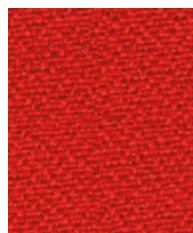
Solano
YB088



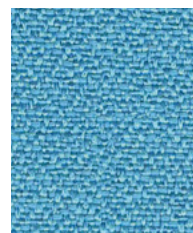
Madura
YB156



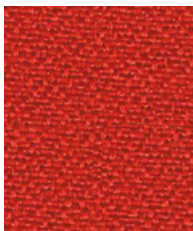
Slip
YB094



Belize
YB105



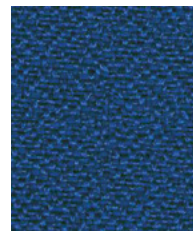
Marianna
YB157



Lobster
YB087



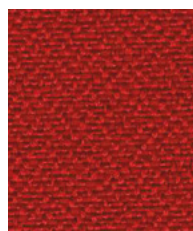
Campeche
YB301



Scuba
YB089



Blizzard
YB108



Calypso
YB106



Paseo
YB019



Havana
YB009



Panels



Acoustic



Environmental



Year guarantee

Lucia is an ever popular crêpe weave synthetic panel fabric. It's manufactured from 100% recycled polyester saving virgin raw materials for a reduced environmental footprint. Lucia is available in a bold and bright color palette and has a non lustrous appearance.



Lucia meets the ACT voluntary Performance Guidelines for panel fabrics. Lucia is a UL Recognized Component.

Technical information

EN

Composition

100% Post Consumer Recycled Polyester
Non metallic dyestuffs

Environment

Certified to the EU Ecolabel
Certified to OEKO-TEX® Standard 100
Made from 100% post-consumer recycled polyester

Width

66 inches minimum

Weight

7^{3/4} oz/sq yd ±5% (14 oz/running yd ±5%)

Flammability

BS 7176 Low Hazard
ASTM E84 Class 1 or A (Adhered)
ASTM E84 Class 1 or A (Unadhered)
UL 723

Note: Flammability performance is dependent on components used. Our certificates show what substrates have been used in our tests. For composite tests customers must ensure their complete furniture meets the necessary standards.

Color Fastness to Light

AATCC-16 (40 hours) Class 4

Color Fastness to Crocking

AATCC-8 (Dry: 3, Wet: 3)

Acoustic Properties

Acoustically transparent, Acoustic graphs available upon request

Cleaning

W/S
Clean with a water-based cleaning agent or solvent: Depending on the stain, you can use a dry-cleaning solvent, the foam of a mild detergent, or upholstery shampoo.

Batch to batch variations in shade may occur within commercial tolerances. We reserve the right to alter technical specifications without notice. The Unregistered Design Rights and the Copyright in all designs are the exclusive property of Camira Fabrics Limited.

F

Composition

Fabriqué en polyester recyclé à 100%
Teintures non métalliques

Écologique

Avec le certificat EU Ecolabel
Certifié à OEKO-TEX® Standard 100
Fabriqué en polyester recyclé à 100% après consommation

Largeur

66 pouces minimum

Poids

7^{3/4} oz/sq yd ±5% (14 oz/lin.yd ±5%)

Flammabilité

BS 7176 Low Hazard
ASTM E84 Class 1 or A (Adhered)
ASTM E84 Class 1 or A (Unadhered)
UL 723

Note: La performance de flammabilité dépend des composantes utilisées. Nos certificats indiquent les substrats utilisés dans nos tests. Pour les tests composites, les clients doivent s'assurer que leurs meubles complets satisfont aux normes nécessaires.

Solidité à la Lumière

AATCC-16 (40 heures) Class 4

Solidité à la Crocking

AATCC-8 (Sec: 3, Mouillé: 3)

Propriétés Acoustiques

Acoustiquement transparent, graphiques acoustiques disponibles sur demande

Nettoyage

W/S
Nettoyer avec un produit d'entretien à base d'eau: en fonction de la tâche, vous pouvez nettoyer à sec, à l'aide d'un détergent ou bien avec du shampooing pour meubles.

Une variation de couleurs peut provenir (commerciallement tolérable). Nous réservons le droit de changer les spécifications techniques sans préavis. Les Droits de Conception non-enregistrés et les droits d'auteur de tous les motifs sont la propriétés exclusives de Camira Fabrics Limited.

ES

Composición

Producido con poliéster 100% reciclado
Tintes no metálicos

Ambiental

Certificado con EU Ecolabel
Certificado de OEKO-TEX® Standard 100
Producido con poliéster 100% reciclado tras ser consumido

Ancho

66 pulgadas mínimo

Peso

7^{3/4} oz/sq yd ±5% (14 oz/lin.y ±5%)

Inflamabilidad

BS 7176 Low Hazard
ASTM E84 Class 1 or A (Adhered)
ASTM E84 Class 1 or A (Unadhered)
UL 723

Nota: El rendimiento de la inflamabilidad depende de los componentes usados. Nuestros certificados muestran qué substratos se han usado en nuestros tests. Para tests compuestos nuestros clientes deben asegurar si sus muebles cumplen la normativa al uso.

Solidez a la Luz

AATCC-16 (40 horas) Class 4

Solidez al Rozamiento

AATCC-8 (Húmedo: 3, Seco: 3)

Acústico Propiedades

Acústicamente transparente, gráficos disponibles bajo petición

Limpeza

W/S
Lavar con un producto de limpieza neutro o solvente: en función de la suciedad o mancha, se puede limpiar con un producto de limpieza en seco, espuma templada o producto de limpieza de sofás.

Se reserva el derecho de modificar las especificaciones técnicas sin previo aviso. Los derechos sobre dibujos no registrados y los derechos de autor sobre todos los dibujos son propiedad exclusiva de Camira Group Inc.