

Aura: Twist - Product information

Aura Twist is a stylish wool rich moquette, reviving a textile classic which is re-interpreted into modern, geometric inspired designs on a darker background with carefully selected accent colorways. The distinctive designs combine linear, architectural and structural patterning in a variety of scales, with the highlight colors coordinating with other complementary finishes in our leather, vinyl and flat woven ranges.

Aura Twist can also be made to order using colors from our Aura Classic range.

Contact

UK Head Office:	+44 (0)1924 490491
France/Belgium	+32 56 227 266
Germany:	+49 7031 60 84 30
Scandinavia:	+45 32 55 20 01
Netherlands:	+31 7361 25120
USA:	1 616 288 0655
China:	+ 86 (0) 21 6133 1812

www.camirafabrics.com



Technical information

EN

Composition

Pile: 70% Wool, 12% Nylon, 18% Polyester (with effect yarn)
Pile: 83% Wool, 17% Nylon (without effect yarn)
Ground: 100% Cotton

Width

59 inches minimum

Weight

24 oz/sq. yd

Thickness

0.165 ± 0.012 inches (BS 4051)

Breaking load

Warp: 145 lb.f min Weft: 145 lb.f min
(EN ISO 13934-1)

Extension at break

5 - 15% (EN ISO 13934-1)

Burst strength

145 lb.f / sq.in (EN ISO 13938-1)

Abrasion Resistance

≥80,000 Martindale cycles (EN ISO 12947)

Flammability*

ECE Reg. 118 Parts 1 & 2
FMVSS 302

Light Fastness

6 (ISO 105 B02)

Fastness to Rubbing

Wet: 4 Dry: 4 (ISO 105 X12)

Acid / Alkali Perspiration

Change in shade: 4 Staining: 4
(ISO 105 E04)

Shampoo (BS 1006 UK-TB)

Shade change: 4 minimum
Staining wool: 4 minimum
Staining cotton: 4 minimum

Maintenance

Vacuum regularly. Wipe clean with a damp cloth or shampoo using proprietary upholstery shampoo.

Colour Matching

Batch to batch variations in shade may occur within commercial tolerances.

The Unregistered Design Rights and the Copyright in all designs are the exclusive property of Camira Fabrics Limited.

F

Composition

Surface: 70% Laine, 12% Nylon, 18% Polyester (avec effect yarn)
Surface: 83% Laine, 17% Nylon (sans effect yarn)
Couche Inférieure: 100% Cotton

Largeur

59 pouces minimum

Poids

24 oz/sq. yd

Épaisseur

0.165 ± 0.012 pouces (BS 4051)

Résistance à la traction

Chaîne: 145 lb.f min Trame: 145 lb.f min
(EN ISO 13934-1)

Allongement à la rupture par traction

5 - 15% (EN ISO 13934-1)

Résistance à l'éclatement

145 lb.f / sq.in (EN ISO 13938-1)

Résistance à l'abrasion

≥80,000 Martindale tours (EN ISO 12947)

Flammabilité*

ECE Reg. 118 Parts 1 & 2
FMVSS 302

Solidité à la lumière

6 (ISO 105 B02)

Solidité au frottement

Mouillé: 4 Sec: 4 (ISO 105 X12)

Transpiration Acid / Alkaline

Dégorgement: 4 Tâches: 4
(ISO 105 E04)

Shampooing (BS 1006 UK-TB)

Changement de teinte: 4 minimum
Tâche sur laine: 4 minimum
Tâche sur coton: 4 minimum

Nettoyage

Aspirer régulièrement. Essuyer avec une étoffe humide ou nettoyer à l'aide d'un produit approprié pour tissus d'ameublement.

Standardisation des coloris

Variations de coloris d'un bain à un autre peuvent se manifester.

The Unregistered Design Rights and the Copyright in all designs are the exclusive property of Camira Fabrics Limited.

ES

Composición

Superficie: 70% Lana, 12% Nylon, 18% Polyester (con effect yarn)
Substrato: 83% Lana, 17% Nylon (sin effect yarn)
Superficie: 100% Cotton

Ancho

59 pulgadas mínimo

Peso

24 oz/sq. yd

Espesor

0.165 ± 0.012 pulgadas (BS 4051)

Resistencia a la tracción

Urdimbre: 145 lb.f min Trama: 145 lb.f min
(EN ISO 13934-1)

Extensión a la ruptura por tracción

5 - 15% (EN ISO 13934-1)

Resistencia a la rotura

145 lb.f / sq.in (EN ISO 13938-1)

Resistencia a la abrasión

≥80,000 Martindale ciclos (EN ISO 12947)

Inflamabilidad*

ECE Reg. 118 Parts 1 & 2
FMVSS 302

Solidez a la luz

6 (ISO 105 B02)

Solidez al rozamiento

Húmedo: 4 Seco: 4 (ISO 105 X12)

Transpiración ácida / alcalina

Variaciones de tintada: 4 Manchas: 4
(ISO 105 E04)

Champú (BS 1006 UK-TB)

Variaciones de tintada: 4 mínimo
Manchas en tejidos de lana: 4 mínimo
Manchas en tejidos de algodón: 4 mínimo.

Limpieza

Limpiar con aspiradora frecuentemente. Bien lavar con un paño húmedo o con un champú apropiado para tapicería.

Continuidad de colores

Cada tintada puede tener pequeñas variaciones en el tono dentro de las tolerancias comerciales aceptadas.

The Unregistered Design Rights and the Copyright in all designs are the exclusive property of Camira Fabrics Limited.

camira

style with substance

www.camirafabrics.com



Transport seating



Reg. 118



Year guarantee

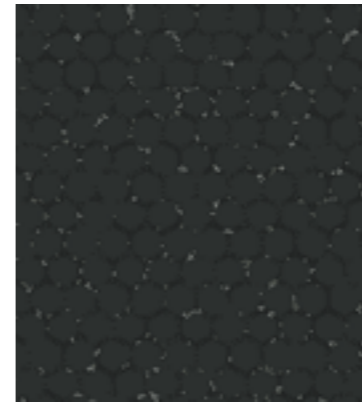
Photographic fabric scans are not color accurate. Always request actual fabric samples before ordering.



CCFC11



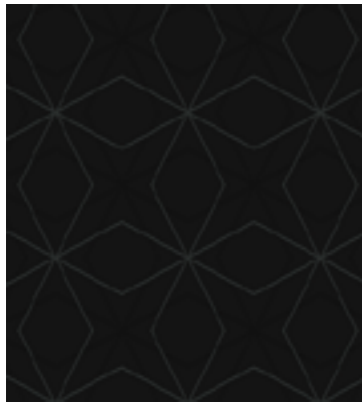
CCDC11



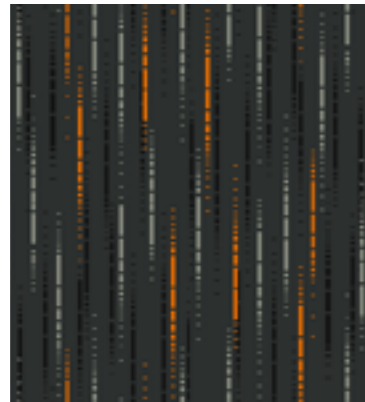
CCHB96



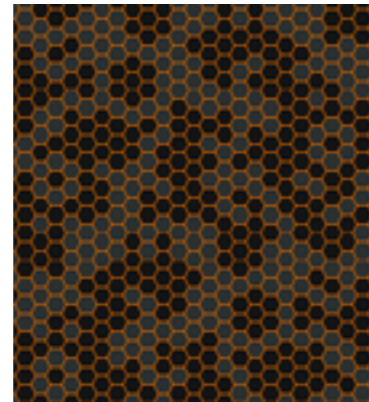
CCLB96



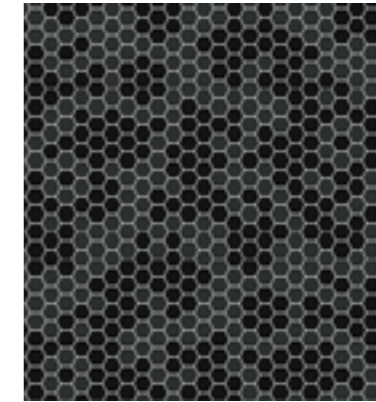
CCDC12



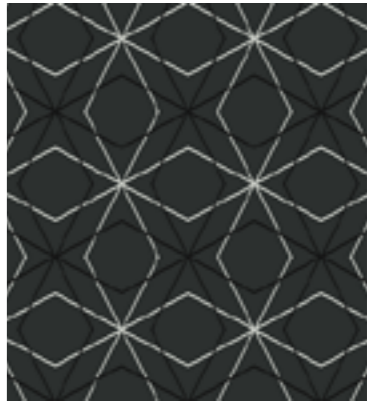
CCGC11



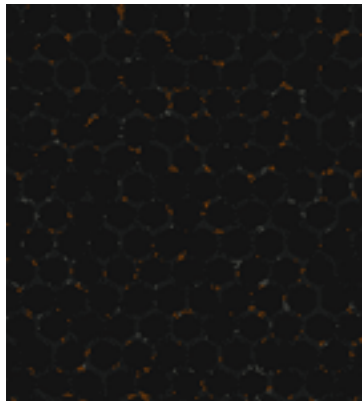
CCCC11



CCCB96



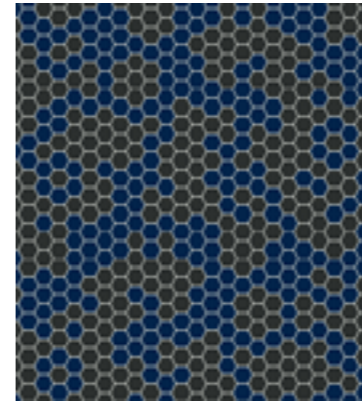
CCKB96



CCEC11



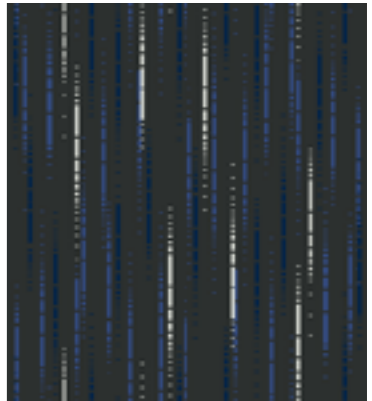
CCCC12



CCPC14



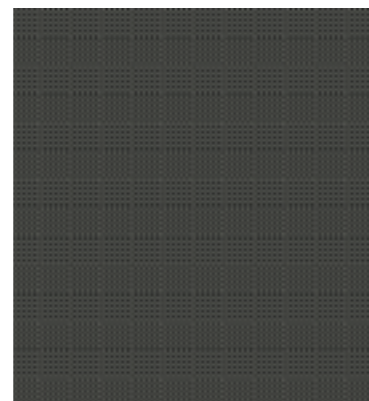
CCRC14



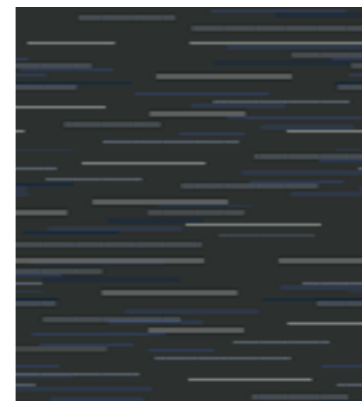
CCQC14



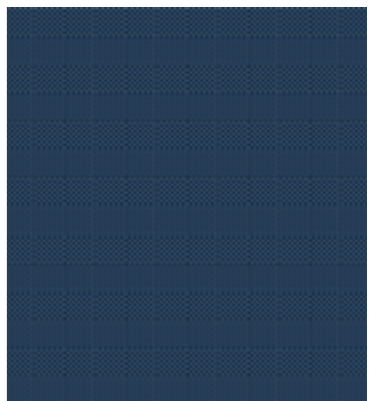
CCJB96



CCFB96



CCMC14



CCNC14