

# Track

---

## camira



**Path**  
HTK03



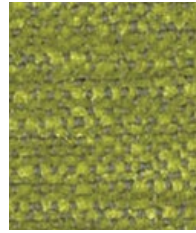
**Roam**  
HTK05



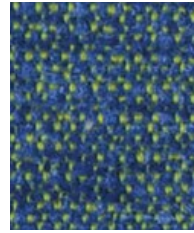
**Carry**  
HTK13



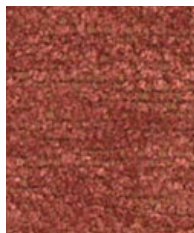
**Discover**  
HTK11



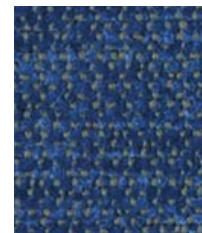
**Drive**  
HTK02



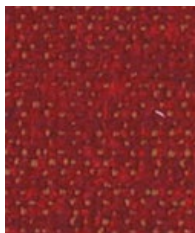
**Footprint**  
HTK14



**Clue**  
HTK04



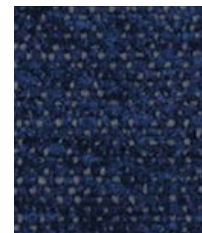
**Location**  
HTK09



**Way**  
HTK07



**Hunt**  
HTK12

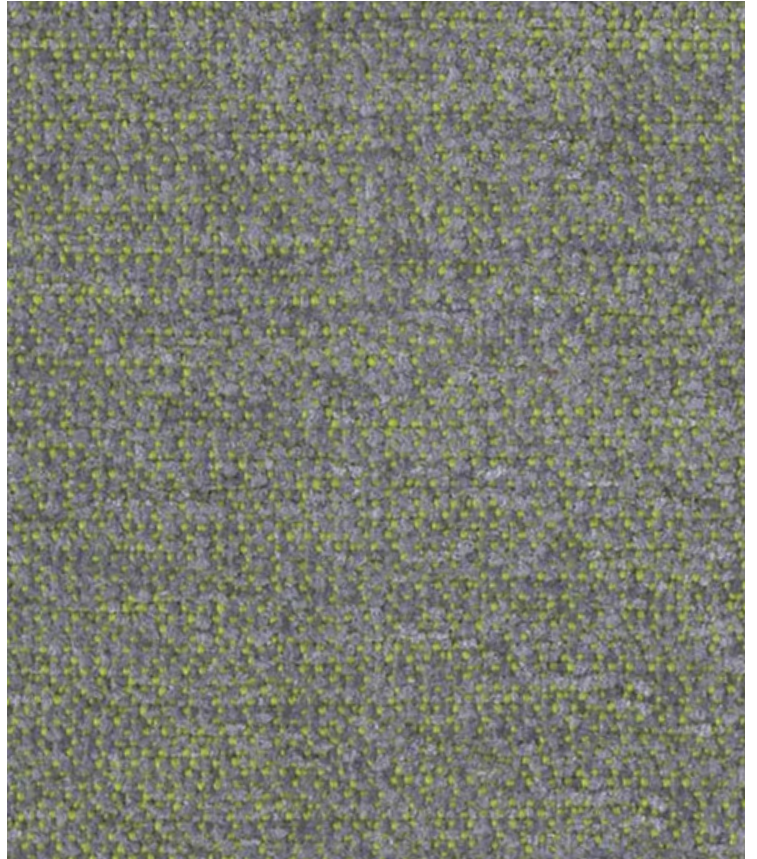


**Passage**  
HTK15

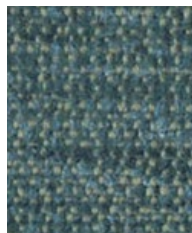
Photographic fabric scans are not color accurate. Always request actual fabric samples before ordering.



**Place**  
HTK06



**Route**  
HTK08



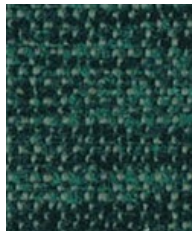
**Rail**  
HTK10



**Rock**  
HTK01



**Scramble**  
HTK17



**Traverse**  
HTK18



**Rough**  
HTK16

Transport  
seating

Washable



Year guarantee

Track is a luxurious Trevira® CS chenille fabric which can be used for fixed or removable upholstery applications. Soft and relaxed yet still high performing, Track is available in a selection of colorways: classic mono shades and playful contrast colors. Custom colours are also available.

If used as a removable cover, the fabric can be washed up to 140°F.

The slubby look of Track eludes to glitches found in distinctive hand-crafted design. Beauty in irregularity.



## Technical information

### EN

#### Composition

100% Trevira CS® Flame Retardant Polyester

#### Width

54 inches minimum

#### Weight

16<sup>1/4</sup> oz/sq yd ±5% (24<sup>1/2</sup> oz/running yd ±5%)

#### Abrasion Resistance\*

ASTM D4157 Wyzenbeek method, Heavy Duty Upholstery  
Independently certified to ≥100,000 double rubs  
Covered by a full and comprehensive 5 year guarantee  
(full details available)

#### Flammability

FMVSS 302

NFPA 130

*Note: Flammability performance is dependent on components used. Our certificates show what substrates have been used in our tests. For composite tests customers must ensure their complete furniture meets the necessary standards.*

#### Color Fastness to Light

AATCC-16 (40 hours) Class 4

#### Fastness to Crocking

AATCC-8 (Dry: 4, Wet: 3)

#### Shampoo

4 (BS 1006 UK-TB)

#### Maintenance

Vacuum regularly. Wipe clean with a damp cloth or shampoo using proprietary upholstery shampoo.  
Removable covers: Washable to 140°F.

#### Color Matching

Batch to batch variations in shade may occur within commercial tolerances.

The Unregistered Design Rights and the Copyright in all designs are the exclusive property of Camira Fabrics Limited.

### F

#### Composition

100% Trevira CS® Schwerentflammbares Polyester

#### Largeur

54 pouces minimum

#### Poids

16<sup>1/4</sup> oz/sq yd ±5% (24<sup>1/2</sup> oz/yd.lin ±5%)

#### Résistance à l'abrasion\*

ASTM D4157 Wyzenbeek method, Heavy Duty Upholstery  
Certificat indépendant ≥100,000 double frottement  
Avec une garantie totale de durabilité de 5 ans  
(renseignements complémentaires disponibles)

#### Flammabilité

FMVSS 302

NFPA 130

*Notez: La performance de flammabilité dépend des composants utilisées. Nos certificats indiquent les substrats utilisés dans nos tests. Pour les tests composites, les clients doivent s'assurer que leurs meubles complets satisfont aux normes nécessaires.*

#### Solidité à la Lumière

AATCC-16 (40 heures) Class 4

#### Solidité à la Crocking

AATCC-8 (Sec: 4, Mouillé: 3)

#### Shampooing

4 (BS 1006 UK-TB)

#### Nettoyage

Aspirer régulièrement. Essuyer avec une étoffe humide ou nettoyer à l'aide d'un produit approprié pour tissu d'ameublement. Revêtements détachables: Lavable jusqu'à 140°F.

#### Standardisation des coloris

Variations de coloris d'un bain à un autre peuvent se manifester.

The Unregistered Design Rights and the Copyright in all designs are the exclusive property of Camira Fabrics Limited.

### ES

#### Composición

100% Trevira CS® Polyester retardateur de flamme

#### Ancho

54 pulgadas mínimo

#### Peso

16<sup>1/4</sup> oz/sq yd ±5% (24<sup>1/2</sup> oz/lin.y ±5%)

#### Resistencia a la abrasión\*

ASTM D4157 Wyzenbeek method, Heavy Duty Upholstery  
independientemente del certificado de ≥100,000  
rozamiento doble  
Con garantía total de uso 5 años  
(más información disponible bajo consulta)

#### Inflamabilidad

FMVSS 302

NFPA 130

*Nota: El rendimiento de la inflamabilidad depende de los componentes usados. Nuestros certificados muestran qué substratos se han usado en nuestros tests. Para tests compuestos nuestros clientes deben asegurar si sus muebles cumplen la normativa al uso.*

#### Solidez a la Luz

AATCC-16 (40 horas) Class 4

#### Solidez al Rozamiento

AATCC-8 (Seco: 4, Húmedo: 3)

#### Champú

4 (BS 1006 UK-TB)

#### Limpeza

Aspirar regularmente. Limpie con un paño húmedo o champú usando un champú para tapicería patentado.  
Funda desfundable: Lavable hasta 140°F.

#### Continuidad de colores

Cada tintada puede tener pequeñas variaciones en el tono dentro de las tolerancias comerciales aceptadas.

The Unregistered Design Rights and the Copyright in all designs are the exclusive property of Camira Fabrics Limited.