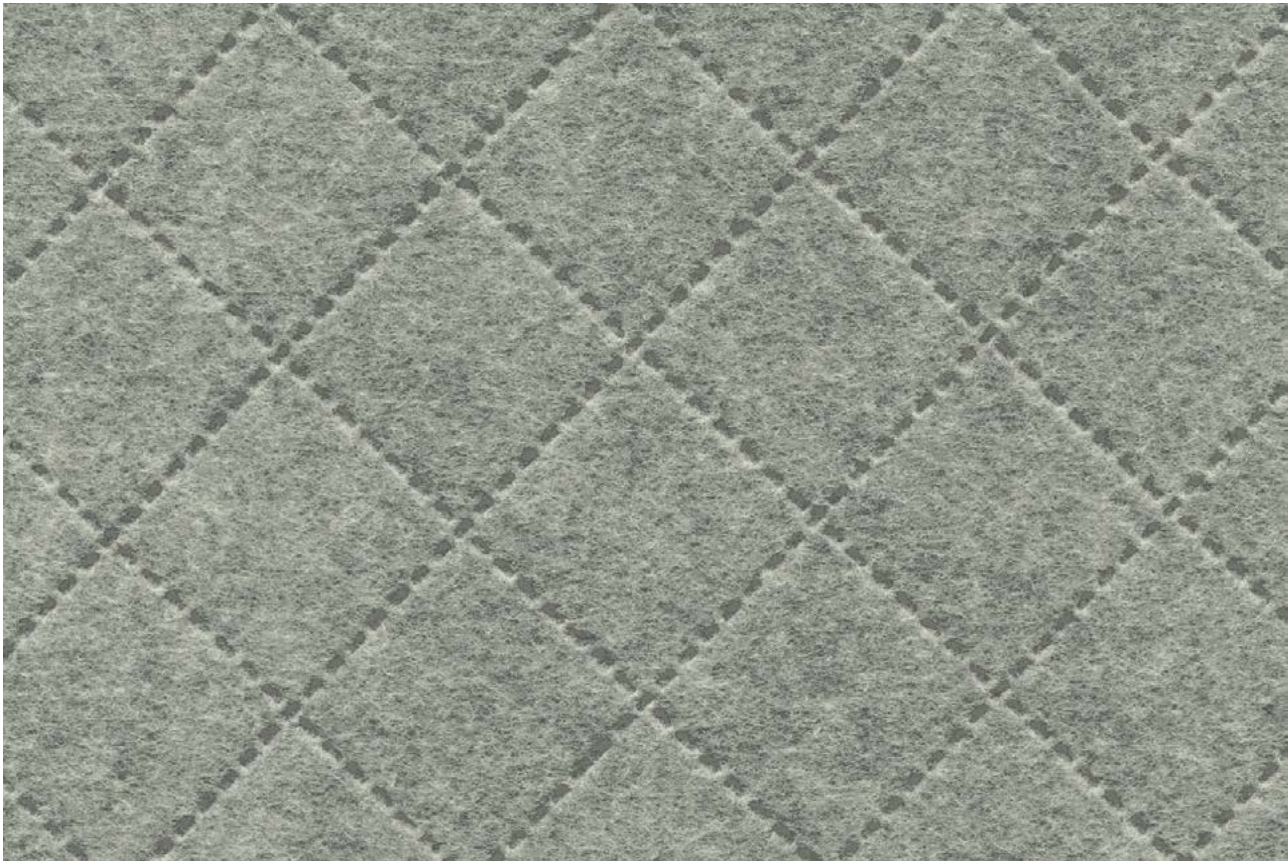


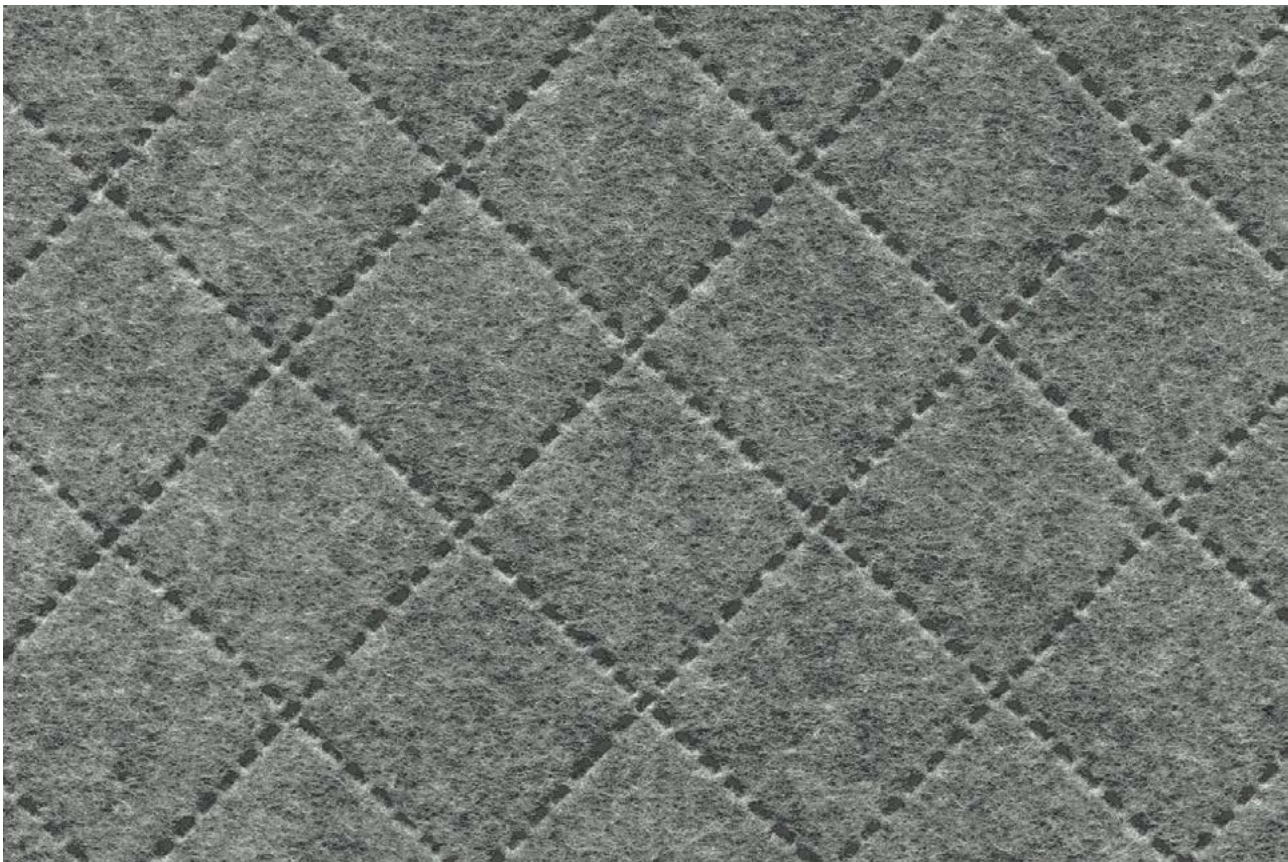
# Sonus & Sonus Etch

---

**camira**



**Scribe**  
SJR03



**Carve**  
SJE04

Photographic fabric scans are not color accurate. Always request actual fabric samples before ordering.



**Voice**  
FHR02



**Audio**  
FHR06



**Beat**  
FHR03



**Song**  
FHR01



**Rap**  
FHU11



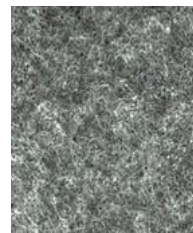
**Soul**  
FHR13



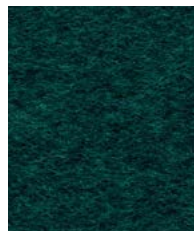
**Pop**  
FHR09



**Acoustic**  
FHR12



**Music**  
FHU04



**Lyric**  
FHU15



**Classical**  
FHU14



**Chorus**  
FHR17



**Vocal**  
FHU08



**Verse**  
FHR16



Panels



Acoustic



Year guarantee

With a pressed felt finish and an appealing mélange effect, Sonus is the ideal accompaniment for a modern interior. It comes in a wide color palette and its acoustically transparent properties make it the perfect enhancement for a wide range of applications across vertical surfaces. Sonus Etch brings added intrigue through its subtle surface embossed lattice design and is available in two complementary shades of gray.



Sonus & Sonus Etch meet the ACT voluntary Performance Guidelines as indicated

## Technical information

### EN

#### Composition

**Sonus FHR & Sonus Etch SJR codes:**  
72% Polyester, 18% Nylon, 10% Viscose  
**Sonus FHU & Sonus Etch SJE codes:**  
57% Polyester, 43% Nylon

#### Width

**Sonus:**  
67 inches minimum  
**Sonus Etch:**  
67 inches roll width  
(61 inches usable pattern)

#### Weight

6 oz/sq yd ±10% (12 oz/running yd ±10%)

#### Flammability

**Sonus FHR codes:**  
ASTM E84 Class 1 or A (Adhered)  
ASTM E84 Class 2 or B (Un-adhered)  
**Sonus FHU codes:**  
ASTM E84 Class 2 or B (Adhered)  
ASTM E84 Class 2 or B (Un-adhered)  
**Sonus Etch codes:**  
ASTM E84 Class 2 or B (Adhered)  
ASTM E84 Class 1 or A (Un-adhered)  
*Note: Flammability performance is dependent on components used. Our certificates show what substrates have been used in our tests. For composite tests customers must ensure their complete furniture meets the necessary standards.*

#### Color Fastness to Light

AATCC-16 (40 hours) Class 4

#### Color Fastness to Crocking

AATCC-8 (Dry: 3, Wet: 3)

#### Acoustic Properties

Acoustically transparent, Acoustic graphs available upon request

#### Cleaning

W/S  
Water-based cleaning agent or solvent: Depending on the stain, you can use a dry-cleaning solvent, the foam of a mild detergent, or upholstery shampoo.

Please note that seam performance is dependent on seam construction and needle and thread type. We recommend that appropriate sewing advice be taken.

Batch to batch variations in shade may occur within commercial tolerances. We reserve the right to alter technical specifications without notice. The Unregistered Design Rights and the Copyright in all designs are the exclusive property of Camira Fabrics Limited.

### F

#### Composition

**Codes pour Sonus FHR et Sonus Etch SJR:**  
72% Polyester, 18% Polyamide, 10% Viscose  
**Codes pour Sonus FHU et Sonus Etch SJE:**  
57% Polyester, 43% Polyamide

#### Largeur

**Sonus:**  
67 pouces minimum  
**Sonus Etch:**  
Largeur du rouleau: 67 pouces  
(modèle utilisable: 61 pouces)

#### Poids

6 oz/sq yd ±10% (12 oz/yd.lin ±10%)

#### Flammabilité

**Codes pour Sonus FHR:**  
ASTM E84 Class 1 or A (Adhered)  
ASTM E84 Class 2 or B (Un-adhered)  
**Codes pour Sonus FHU:**  
ASTM E84 Class 2 or B (Adhered)  
ASTM E84 Class 2 or B (Un-adhered)  
**Codes pour Sonus Etch:**  
ASTM E84 Class 2 or B (Adhered)  
ASTM E84 Class 1 or A (Un-adhered)  
*Notez: La performance de flammabilité dépend des composantes utilisées. Nos certificats indiquent les substrats utilisés dans nos tests. Pour les tests composites, les clients doivent s'assurer que leurs meubles complets satisfont aux normes nécessaires.*

#### Solidité à la Lumière

AATCC-16 (40 heures) Class 4

#### Solidité à la Crocking

AATCC-8 (Sec: 3, Mouillé: 3)

#### Propriétés Acoustiques

Acoustiquement transparent, graphiques acoustiques disponibles sur demande

#### Nettoyage

W/S  
Nettoyer avec un produit d'entretien à base d'eau : en fonction de la tâche, vous pouvez nettoyer à sec, à l'aide d'un détergent ou bien avec du shampoing pour meubles.

Veillez noter que la performance du joint dépend de sa construction ainsi que de l'aiguille et du type de fil utilisés.

Une variation de couleurs peut provenir (commerciallement tolérable). Nous réservons le droit de changer les spécifications techniques sans préavis. Les Droits de Conception non-enregistrés et les droits d'auteur de tous les motifs sont la propriété exclusive de Camira Fabrics Limited.

### ES

#### Composición

**Sonus FHR & Sonus Etch SJR códigos:**  
72% Poliéster, 18% Poliamida, 10% Viscosa  
**Sonus FHU & Sonus Etch SJE códigos:**  
57% Poliéster, 43% Poliamida

#### Ancho

**Sonus:**  
67 pulgadas mínimo  
**Sonus Etch:**  
Ancho rollo 67 pulgadas  
(aprovechamiento del diseño 61 pulgadas)

#### Peso

6 oz/sq yd ±10% (12 oz/lin.y ±10%)

#### Inflamabilidad

**Sonus FHR códigos:**  
ASTM E84 Class 1 or A (Adhered)  
ASTM E84 Class 2 or B (Un-adhered)  
**Sonus FHU códigos:**  
ASTM E84 Class 2 or B (Adhered)  
ASTM E84 Class 2 or B (Un-adhered)  
**Sonus Etch códigos:**  
ASTM E84 Class 2 or B (Adhered)  
ASTM E84 Class 1 or A (Un-adhered)  
*Nota: El rendimiento de la inflamabilidad depende de los componentes usados. Nuestros certificados muestran qué substratos se han usado en nuestros tests. Para tests compuestos nuestros clientes deben asegurar si sus muebles cumplen la normativa al uso.*

#### Solidez a la Luz

AATCC-16 (40 horas) Class 4

#### Solidez al Rozamiento

AATCC-8 (Seco: 3, Húmedo: 3)

#### Acústico Propiedades

Acústicamente transparente, gráficos disponibles bajo petición

#### Limpieza

W/S  
Lavar con un producto de limpieza neutro o solvente: en función de la suciedad o mancha, se puede limpiar con un producto de limpieza en seco, espuma templada o producto de limpieza de sofás.

Tenga en cuenta que el rendimiento de la costura depende de la construcción de la costura, además de la aguja y del tipo de rosca. Le recomendamos que se aconsejen para coser la costura.

Se reserva el derecho de modificar las especificaciones técnicas sin previo aviso. Los derechos sobre dibujos no registrados y los derechos de autor sobre todos los dibujos son propiedad exclusiva de Camira Group Inc.