

## Fusion - Product information

Fusion is a high content wool moquette fabric with a great environmental profile. It's 10% lighter in weight compared to traditional pile fabrics, saving raw materials and giving fuel saving potential, without compromising technical performance.

Comprising a variety of designs, the range offers a mixed palette of subtle trend colors and traditional brights.



## Technical information

### US

#### Composition

Pile: 60% Wool, 16% Nylon, 13% Viscose, 11% Polyester  
Backing: 67% Polyester, 33% Viscose

#### Width

59 inches

#### Weight

21.5 oz/sq yd

#### Thickness

0.14 inches (BS 4051)

#### Breaking load

Warp: 700N min Weft: 1000N min  
(BS EN ISO 13934-1, DIN 53847)

#### Extension at break

10% minimum (BS EN ISO 13934-1)

#### Burst strength

1000kPa min (BS EN ISO 13938-1)

#### Abrasion Resistance

80,000 Martindale cycles (BS EN ISO 12947)

#### Flammability

ECE Regulation No. 118  
FMVSS 302 (ISO 3795)

#### Light Fastness

6 (BS EN ISO 105 B02)

#### Fastness to Rubbing

Wet: 4 Dry: 4 (BS EN ISO 105 X12)

#### Fastness to Water

Change in shade: 4/5 Staining: 4  
(BS EN ISO 105 E01)

#### Dry Cleaning

Solvent: 4/5 min  
Change in shade: 4/5 min  
Staining: 4/5 min  
(BS EN ISO 105 D01)

#### Spotting

E07 (water): 4/5 min  
E05 (acid): 4/5 min  
E06 (alkali): 4/5 min  
(BS EN ISO 105)

#### Shampoo

Shade change: 4/5 min  
Staining wool: 4 min  
Staining cotton: 4 min  
(BS 1006 UK-TB)

#### Maintenance

Vacuum regularly. Wipe clean with a damp cloth or shampoo using propriety upholstery shampoo.

#### Color Matching

Batch to batch variations in shade may occur within commercial tolerances.

The Unregistered Design Rights and the Copyright in all designs are the exclusive property of Camira Fabrics Limited.

### Contact

UK Head Office: +44 (0)1924 490491

USA: 616 288 0655

Australasia: +61 3 9832 0624

[www.camirafabrics.com](http://www.camirafabrics.com)



## ES

### ES

#### Composición

Superficie: 60% Lana, 16% Nylon, 13% Viscose, 11% Polyester  
Sustrato: 67% Polyester, 33% Viscose

#### Ancho

59 pulgadas

#### Peso

21.5 oz/sq yd

#### Espesor

0.14 pulgadas (BS 4051)

#### Resistencia a la tracción

Urdimbre: 700N min Trama: 1000N min  
(BS EN ISO 13934-1, DIN 53847)

#### Extensión a la ruptura por tracción

10% minimum (BS EN ISO 13934-1)

#### Resistencia a la rotura

1000kPa min (BS EN ISO 13938-1)

#### Resistencia a la abrasión

80,000 Martindale ciclos (BS EN ISO 12947)

#### Inflamabilidad

ECE Regulation No. 118  
FMVSS 302 (ISO 3795)

#### Solidez a la luz

6 (BS EN ISO 105 B02)

#### Solidez al rozamiento

Húmedo: 4 Seco: 4 (BS EN ISO 105 X12)

#### Resistencia al agua

Variaciones de tintada: 4/5 Manchas: 4  
(BS EN ISO 105 E01)

#### Limpieza en seco

Disolvente: 4/5 min  
Shade Cambio: 4/5 min  
Tareas: 4/5 min  
(BS EN ISO 105 E01)

#### Spotting

E07 (agua): 4/5 min  
E05 (ácido): 4/5 min  
E06 (alcalino): 4/5 min  
(BS EN ISO 105)

#### Champú

Variaciones de tintada: 4/5 min  
Manchas en tejidos de lana: 4 min  
Manchas en tejidos de algodón: 4 min  
(BS 1006 UK-TB)

#### Limpieza

Limpiar con aspiradora frecuentemente. Bien lavar con un paño húmedo o con un champú apropiado para tapicería.

#### Continuidad de colores

Cada tintada puede tener pequeñas variaciones en el tono dentro de las tolerancias comerciales aceptadas.

The Unregistered Design Rights and the Copyright in all designs are the exclusive property of Camira Fabrics Limited.

### F

#### Composition

Surface: 60% Laine, 16% Nylon, 13% Viscose, 11% Polyester  
Couche Inférieure: 67% Polyester, 33% Viscose

#### Poids

59 pouces

#### Largeur

21.5 oz/sq yd

#### Epaisseur

0.14 pouces (BS 4051)

#### Résistance à la traction

Chaîne: 700N min Trame: 1000N min  
(BS EN ISO 13934-1, DIN 53847)

#### Allongement à la rupture par traction

10% mínimo (BS EN ISO 13934-1)

#### Résistance à l'éclatement

1000kPa min (BS EN ISO 13938-1)

#### Résistance à l'abrasion

80,000 Martindale tours (BS EN ISO 12947)

#### Fiammabilità

ECE Regulation No. 118  
FMVSS 302 (ISO 3795)

#### Solidité à la lumière

6 (BS EN ISO 105 B02)

#### Solidité au frottement

Mouillé: 4 Sec: 4 (BS EN ISO 105 X12)

#### Solidité contre tâches

Dégorgement: 4/5 Tâches: 4  
(BS EN ISO 105 E01)

#### Nettoyage à sec

Solvant: 4/5 min  
Changement de teinte: 4/5 min  
Tâches: 4/5 min  
(BS EN ISO 105 E01)

#### Spotting

E07 (l'eau): 4/5 min  
E05 (acide): 4/5 min  
E06 (alcaline): 4/5 min  
(BS EN ISO 105)

#### Shampooing

Changement de teinte: 4/5 min  
Tâche sur laine: 4 min  
Tâche sur coton: 4 min  
(BS 1006 UK-TB)

#### Nettoyage

Aspirer régulièrement. Essuyer avec une étoffe humide ou nettoyer à l'aide d'un produit approprié pour tissus d'ameublement.

#### Standardisation des coloris

Variations de coloris d'un bain à un autre peuvent se manifester.

The Unregistered Design Rights and the Copyright in all designs are the exclusive property of Camira Fabrics Limited.

# camira

style with substance

[www.camirafabrics.com](http://www.camirafabrics.com)

# Fusion

# 5

# 5

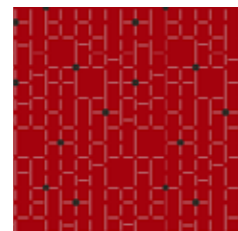
# 5

Transport seating

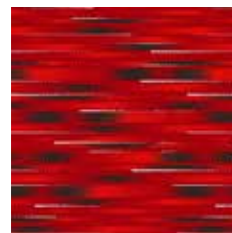
Year guarantee 24 hour use



NAEB11



NBTB11



NBXB11



NBRB11



NBPB11



NBSB11



NBRB12



NBPB12



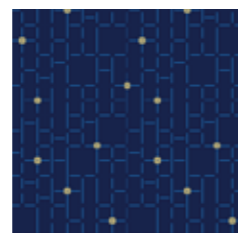
NCAB12



NBYB12



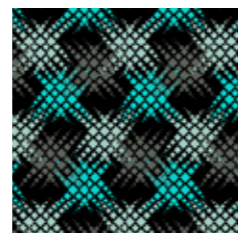
NAEB12



NBTB12



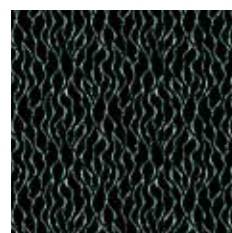
NADB10



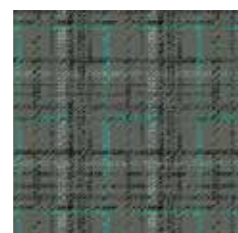
NBPB10



NBUB10



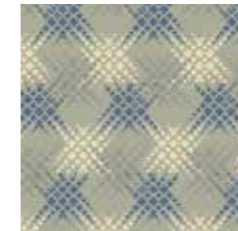
NBSB10



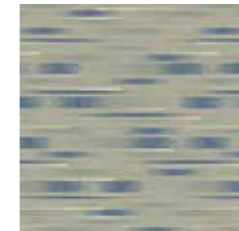
NCBB10



NBWB10



NBVB08



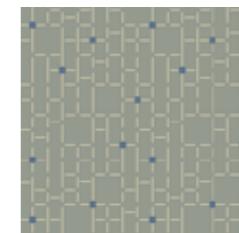
NBQB08



NBRB08



NBSB08



NBTB08



NAEB08



NADB07



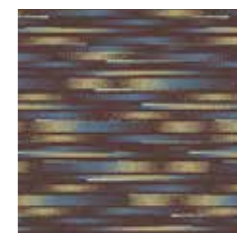
NBUB07



NBVB07



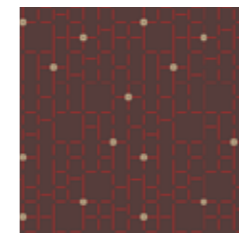
NBWB07



NBXB07



NBYB07



NBTB09



NBSB09



NAEB09



NBYB09



NBZB09



NBRB09