

Patina

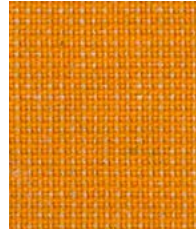
camira



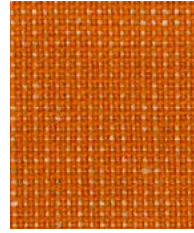
Lustre
PAT16



Evolved
PAT11



Glisten
PAT25



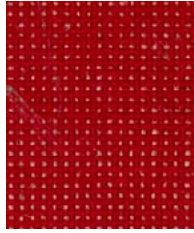
Glazed
PAT26



Bloomed
PAT15



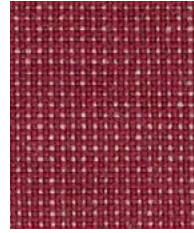
Irregular
PAT09



Braise
PAT27



Twisted
PAT36



Blurred
PAT18



Covered
PAT14



Striated
PAT40



Engrave
PAT43



Lacquer
PAT42



Petrology
PAT29



Tessellate
PAT22



Languish
PAT31



Salvaged
PAT06



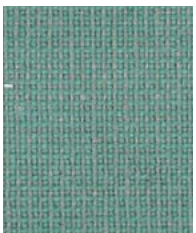
Seamless
PAT23



Sheen
PAT17



Rippled
PAT19



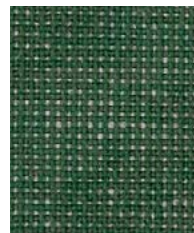
Weathered
PAT01



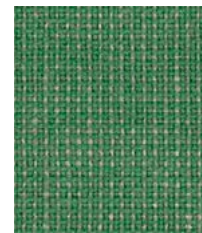
Anodised
PAT32



Reclaimed
PAT05



Speckled
PAT41



Temper
PAT28

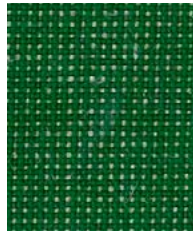
Photographic fabric scans are not color accurate. Always request actual fabric samples before ordering.



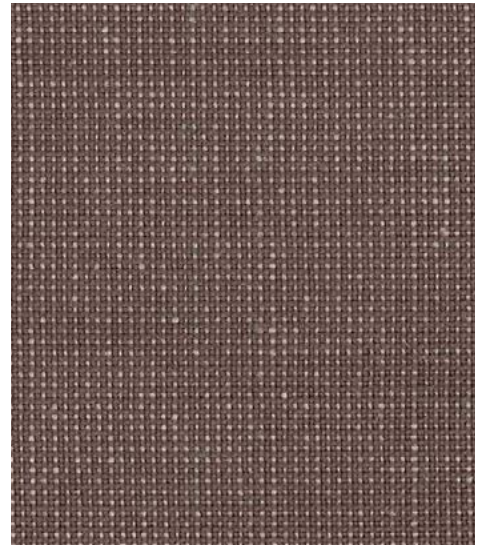
Imprint
PAT39



Meander
PAT21



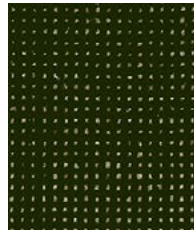
Flecked
PAT38



Smudged
PAT30



Inlay
PAT37



Restored
PAT07



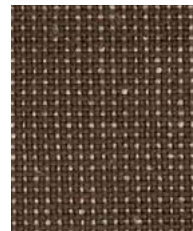
Aged
PAT02



Dusted
PAT13



Matured
PAT10



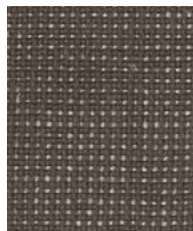
Timeworn
PAT08



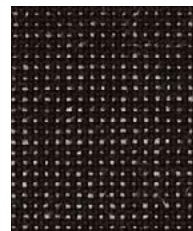
Layered
PAT12



Stony
PAT34



Strata
PAT33



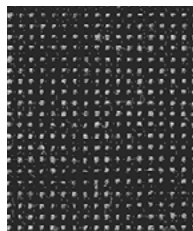
Seasoned
PAT03



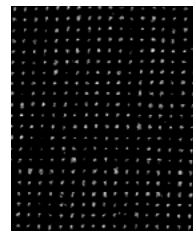
Veneer
PAT04



Chiselled
PAT24



Anneal
PAT35



Toughened
PAT20



Task seating



Lounge seating



Panels



Environmental



Year guarantee

Only by taking a deep breath and slowing down do we become aware of our surroundings and the Pattern in Nature is revealed to us. Patina is designing with nature to achieve beauty with performance. The white flecks scattered across the surface are created by the flax content, just as the flowers would appear in the fields from which it is grown. The palette has been designed to be beautiful in its own right, but also to include new shades that breathe freshness amongst the Camira portfolio. By allowing the natural beauty of its environment to shine through, we've ensured that Patina is truly at home in its new habitat - the office.



Patina meets the ACT voluntary Performance Guidelines and is classified for Heavy Duty Upholstery.



Technical information

EN

Composition

69% Pure New Wool, 22% Flax, 8% Nylon, 1% Viscose

Environment

Certified to the EU Ecolabel
 Certified to Indoor Advantage™ Gold
 Contains wool and bast fiber
 Non metallic dyestuffs

Width

54 inches minimum

Weight

9^{3/4} oz/sq yd ±5% (14^{1/2} oz/running yd ±5%)

Abrasion Resistance*

ASTM D4966 Martindale method, Heavy Duty Upholstery
 Independently certified to ≥100,000 cycles
 Covered by a full and comprehensive 10 year guarantee
 (full details available)

Flammability

California Technical Bulletin 117 - 2013
 NFPA 260 + UFAC Class 1
 BS 7176 Medium Hazard
 ASTM E84 Class 1 or A (Adhered)
 ASTM E84 Class 2 or B (Un-adhered)
Note: Flammability performance is dependent on components used. Our certificates show what substrates have been used in our tests. For composite tests customers must ensure their complete furniture meets the necessary standards.

Color Fastness to Light

AATCC-16 (40 hours) Class 4

Color Fastness to Crocking

AATCC-8 (Dry: 4, Wet: 3)

Cleaning

W/S
 Clean with a water-based cleaning agent or solvent:
 Depending on the stain, you can use a dry-cleaning solvent, the foam of a mild detergent, or upholstery shampoo.

*Camira recognizes that the number of Martindale cycles do not reflect the actual wear performance of fabrics. We're so confident in the durability of our products that we provide a robust 10 year guarantee (full details available). This product is externally certified, details of which are on our website and available from our customer services team.

Multiple factors affect fabric durability and appearance retention, including end-user application and correct maintenance. Results above 100,000 cycles have not been shown to be a reliable indicator of increased fabric lifespan.

Batch to batch variations in shade may occur within commercial tolerances. We reserve the right to alter technical specifications without notice. The Unregistered Design Rights and the Copyright in all designs are the exclusive property of Camira Fabrics Limited.

F

Composition

69% Laine Vierge, 22% Lin, 8% Nylon, 1% Viscose

Écologique

Avec le certificat EU Ecolabel
 Certifié à Indoor Advantage™ Gold
 Contient de la Laine et des fibres originaire de Tiges
 Teintures non métalliques

Largeur

54 pouces minimum

Poids

9^{3/4} oz/sq yd ±5% (14^{1/2} oz/lin ±5%)

Résistance à l'abrasion*

ASTM D4966 Martindale method, Heavy Duty Upholstery
 Certificat indépendant ≥100,000 cycles
 Avec une garantie totale de durabilité de 10 ans
 (renseignements complémentaires disponibles)

Flammabilité

California Technical Bulletin 117 - 2013
 NFPA 260 + UFAC Class 1
 BS 7176 Medium Hazard
 ASTM E84 Class 1 or A (Adhered)
 ASTM E84 Class 2 or B (Un-adhered)
Note: La performance de flammabilité dépend des composantes utilisées. Nos certificats indiquent les substrats utilisés dans nos tests. Pour les tests composites, les clients doivent s'assurer que leurs meubles complets satisfont aux normes nécessaires.

Solidité à la Lumière

AATCC-16 (40 heures) Class 4

Solidité à la Crocking

AATCC (Mouillé: 4, Sec: 3)

Nettoyage

W/S
 Nettoyer avec un produit d'entretien à base d'eau: en fonction de la tâche, vous pouvez nettoyer à sec, à l'aide d'un détergent ou bien avec du shampooing pour meubles.

*Camira reconnaît que le nombre de Martindale cycles ne reflète pas la performance de l'usure réelle des tissus. Nous sommes tellement confiants dans la pérennité de nos produits que nous offrons une garantie solide de 10 ans (plus de détails disponibles). Cette gamme est certifiée externe, vous pouvez d'ailleurs trouver plus de détails sur notre site internet ou en contactant un membre de notre Service Clients.

La durabilité d'un tissu et sa capacité à conserver son aspect sont affectées par divers facteurs, y compris son environnement d'installation et son entretien. Un résultat de 100 000 ou plus (Martindale) n'est pas un indicateur fiable quant à la longévité d'un tissu.

Une variation de couleurs peut provenir (commerciallement tolérable). Nous réservons le droit de changer les spécifications techniques sans préavis. Les Droits de Conception non-enregistrés et les droits d'auteur de tous les motifs sont la propriété exclusive de Camira Fabrics Limited.

ES

Composición

69% Lana Virgen, 22% Lino, 8% Nylon, 1% Viscosa

Ambiental

Certificado con EU Ecolabel
 Certificado de Indoor Advantage™ Gold
 Contiene lana y fibras naturales
 Tintes no metálicos

Ancho

54 pulgadas mínimo

Peso

9^{3/4} oz/sq yd ±5% (14^{1/2} oz/lin ±5%)

Resistencia a la abrasión*

ASTM D4966 Martindale method, Heavy Duty Upholstery
 independientemente del certificado de ≥100,000 ciclos
 Con garantía total de uso 10 años
 (más información disponible bajo consulta)

Inflamabilidad

California Technical Bulletin 117 - 2013
 NFPA 260 + UFAC Class 1
 BS 7176 Medium Hazard
 ASTM E84 Class 1 or A (Adhered)
 ASTM E84 Class 2 or B (Un-adhered)
Note: El rendimiento de la inflamabilidad depende de los componentes usados. Nuestros certificados muestran qué substratos se han usado en nuestros tests. Para tests compuestos nuestros clientes deben asegurar si sus muebles cumplen la normativa al uso.

Solidez a la Luz

AATCC-16 (40 horas) Class 4

Solidez al Rozamiento

AATCC (Húmedo: 4, Seco: 3)

Limpeza

W/S
 Lavar con un producto de limpieza neutro o solvente: en función de la suciedad o mancha, se puede limpiar con un producto de limpieza en seco, espuma templada o producto de limpieza de sofás.

*Camira reconoce que el número de Martindale ciclos no refleja el rendimiento real del desgaste de los tejidos. Estamos tan seguros de la durabilidad de nuestros tejidos que ofrecemos una garantía íntegra de 10 años (los detalles completos están disponibles). Esta gama está certificada externamente, todos los detalles están disponibles en nuestra web y en el departamento de atención al cliente.

Muchos factores afectan la durabilidad y el aspecto del tejido, incluyendo el usuario final y el mantenimiento adecuado. Por encima de 100.000 ciclos de Martindale, no se ha demostrado que indique una mayor durabilidad de los tejidos.

Se reserva el derecho de modificar las especificaciones técnicas sin previo aviso. Los derechos sobre dibujos no registrados y los derechos de autor sobre todos los dibujos son propiedad exclusiva de Camira Group Inc.