

Aura Classic – Product information

Aura Classic is a stylish wool rich moquette in a selection of our most popular shades and designs, ranging from organic orbital swirls to layered geometrics in blues, reds and grays. Some patterns incorporate a highlight specialty crinkle yarn which creates added texture, depth and heightened surface interest.

Aura Classic can also be made to order using colors from our Aura Twist range.

Contact	
UK Head Office:	+44 (0)1924 490491
USA:	616 288 0655
Australasia:	+61 3 9832 0624

www.camirafabrics.com



Technical information

US

Composition

Pile: 70% Wool, 12% Nylon, 18% Polyester (with effect yarn)

Pile: 83% Wool, 17% Nylon (without effect yarn)

Ground: 100% Cotton

Width

59 inches minimum

Weight

24 oz/sq. yd

Thickness

0.165 ± 0.012 inches (BS 4051)

Breaking load

Warp: 145 lb.f min Weft: 145 lb.f min

(EN ISO 13934-1)

Extension at break

5 - 15% (EN ISO 13934-1)

Burst strength

145 lb.f / sq.in (EN ISO 13938-1)

Abrasion Resistance

≥80,000 Martindale cycles (EN ISO 12947)

Flammability

ECE Reg. 118 Parts 1 & 2

FMVSS 302

Light Fastness

6 (ISO 105 B02)

Fastness to Rubbing

Wet: 4 Dry: 4 (ISO 105 X12)

Acid / Alkali Perspiration

Change in shade: 4 Staining: 4

(ISO 105 E04)

Shampoo (BS 1006 UK-TB)

Shade change: 4 minimum

Staining wool: 4 minimum

Staining cotton: 4 minimum

Maintenance

Vacuum regularly. Wipe clean with a damp cloth or shampoo using proprietary upholstery shampoo.

Color Matching

Batch to batch variations in shade may occur within commercial tolerances.

The Unregistered Design Rights and the Copyright in all designs are the exclusive property of Camira Fabrics Limited.

ES

Composición

Superficie: 70% Lana, 12% Nylon, 18% Polyester (con effect yarn)

Substrato: 83% Lana, 17% Nylon (sin effect yarn)

Superficie: 100% Cotton

Ancho

59 pulgadas mínimo

Peso

24 oz/sq. yd

Espesor

0.165 ± 0.012 pulgadas (BS 4051)

Resistencia a la tracción

Urdimbre: 145 lb.f min Trama: 145 lb.f min

(EN ISO 13934-1)

Extensión a la ruptura por tracción

5 - 15% (EN ISO 13934-1)

Resistencia a la rotura

145 lb.f / sq.in (EN ISO 13938-1)

Resistencia a la abrasión

≥80,000 Martindale ciclos (EN ISO 12947)

Inflamabilidad

ECE Reg. 118 Parts 1 & 2

FMVSS 302

Solidez a la luz

6 (ISO 105 B02)

Solidez al rozamiento

Húmedo: 4 Seco: 4 (ISO 105 X12)

Transpiración ácida / alcalina

Variaciones de tintada: 4 Manchas: 4

(ISO 105 E04)

Champú (BS 1006 UK-TB)

Variaciones de tintada: 4 mínimo

Manchas en tejidos de lana: 4 mínimo

Manchas en tejidos de algodón: 4 mínimo

Limpieza

Limpiar con aspiradora frecuentemente. Bien lavar con un paño húmedo o con un champú apropiado para tapicería.

Continuidad de colores

Cada tintada puede tener pequeñas variaciones en el tono dentro de las tolerancias comerciales aceptadas.

The Unregistered Design Rights and the Copyright in all designs are the exclusive property of Camira Fabrics Limited.

F

Composition

Surface: 70% Laine, 12% Nylon, 18% Polyester (avec effect yarn)

Surface: 83% Laine, 17% Nylon (sans effect yarn)

Couche Inférieure: 100% Cotton

Poids

59 pouces minimum

Largeur

24 oz/sq. yd

Épaisseur

0.165 ± 0.012 pouces (BS 4051)

Résistance à la traction

Chaîne: 145 lb.f min Trame: 145 lb.f min

(EN ISO 13934-1)

Allongement à la rupture par traction

5 - 15% (EN ISO 13934-1)

Résistance à l'éclatement

145 lb.f / sq.in (EN ISO 13938-1)

Résistance à l'abrasion

≥80,000 Martindale tours (EN ISO 12947)

Flammabilité

ECE Reg. 118 Parts 1 & 2

FMVSS 302

Solidité à la lumière

6 (ISO 105 B02)

Solidité au frottement

Mouillé: 4 Sec: 4 (ISO 105 X12)

Transpiration Acid / Alcaline

Dégorgement: 4 Tâches: 4

(ISO 105 E04)

Shampooing (BS 1006 UK-TB)

Changement de teinte: 4 minimum

Tâche sur laine: 4 minimum

Tâche sur coton: 4 minimum

Nettoyage

Aspirer régulièrement. Essuyer avec une étoffe humide ou nettoyer à l'aide d'un produit approprié pour tissus d'ameublement.

Standardisation des coloris

Variations de coloris d'un bain à un autre peuvent se manifester.

The Unregistered Design Rights and the Copyright in all designs are the exclusive property of Camira Fabrics Limited.

camira

style with substance

www.camirafabrics.com

Aura Classic



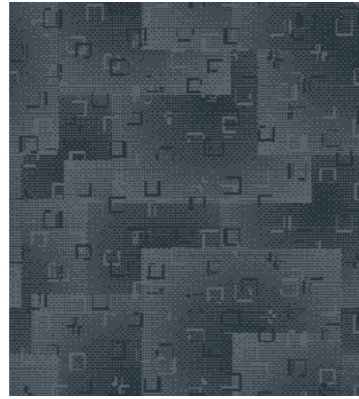
Transport seating



Reg. 118



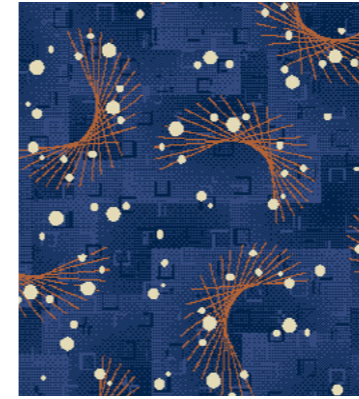
Year guarantee



CAF328



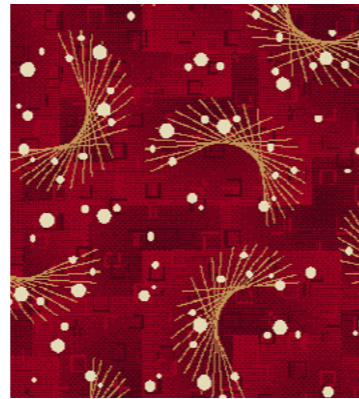
CAA327



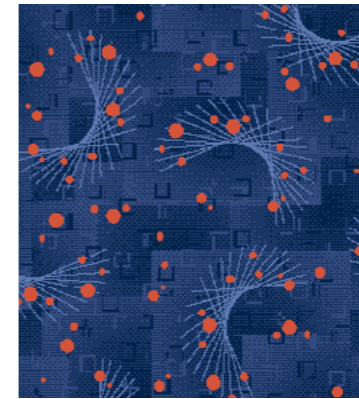
CAA321



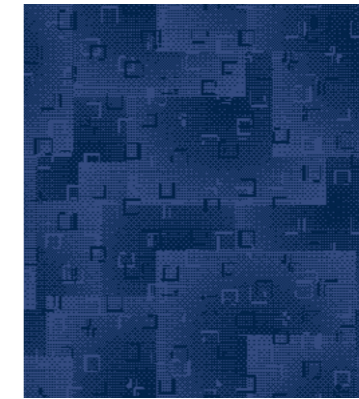
CAJ326



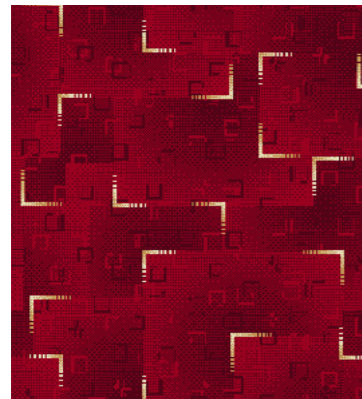
CAA324



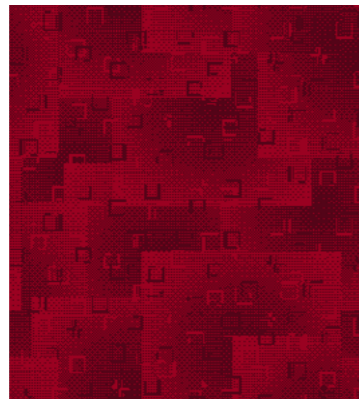
CAA323



CAF322



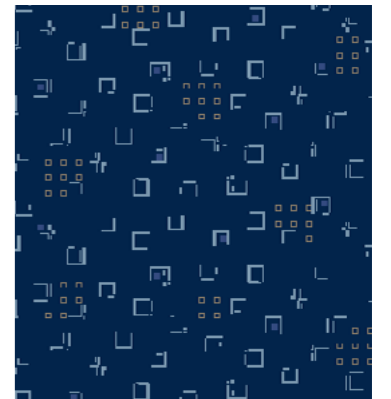
CAV324



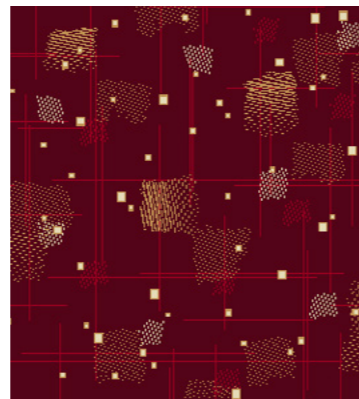
CAF325



CAA326



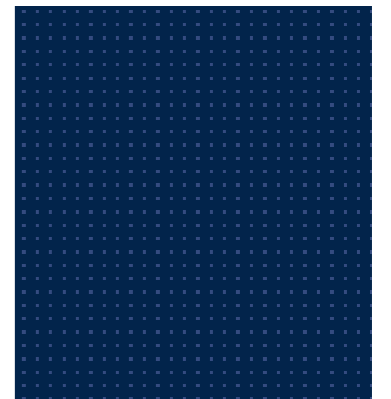
CAI326



CBR324



CAD321



CAM322