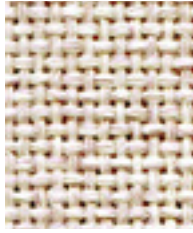


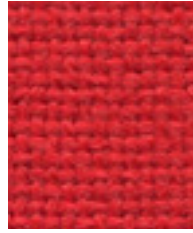
# Cara

---

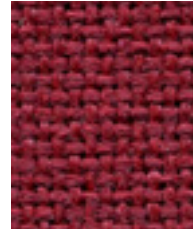
## camira



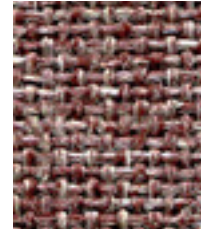
**Clan**  
EJ169



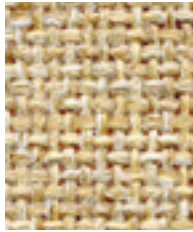
**Pitlochry**  
EJ076



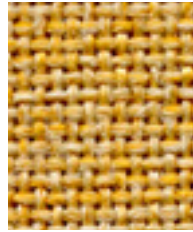
**Tummel**  
EJ038



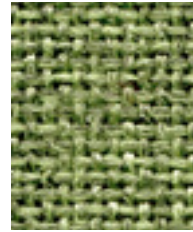
**Lossie**  
EJ197



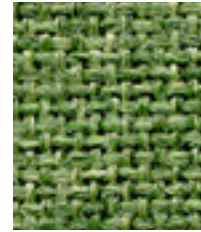
**Austen**  
EJ173



**Maree**  
EJ195



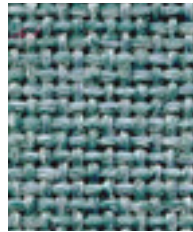
**Fair Isle**  
EJ186



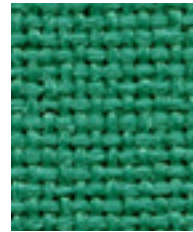
**Staffa**  
EJ185



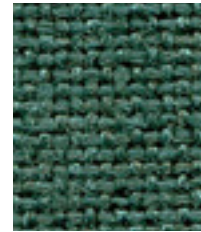
**Glass**  
EJ004



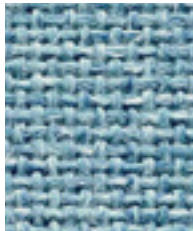
**Ronay**  
EJ189



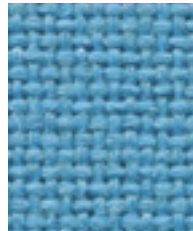
**Carron**  
EJ015



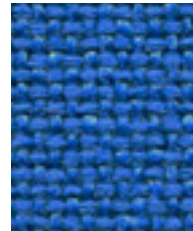
**Lora**  
EJ187



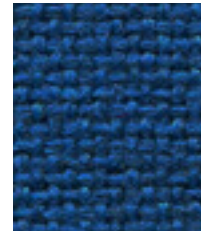
**Dolphin**  
EJ105



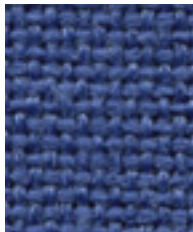
**Inverness**  
EJ175



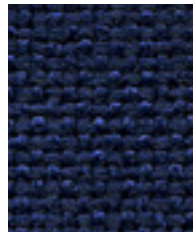
**Galilee**  
EJ125



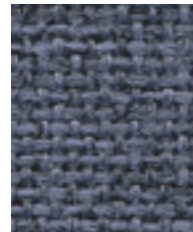
**Cluanie**  
EJ180



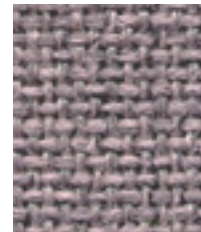
**Adriatic**  
EJ154



**Walten**  
EJ011

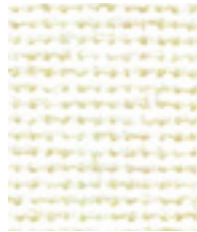


**Easdale**  
EJ188

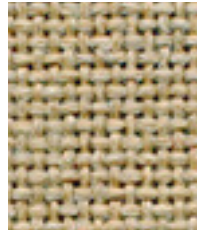


**Denny**  
EJ196

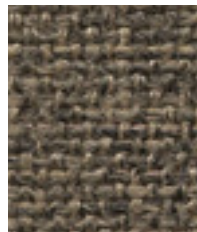
Photographic fabric scans are not colour accurate. Always request actual fabric samples before ordering.



**Vit**  
EJ184



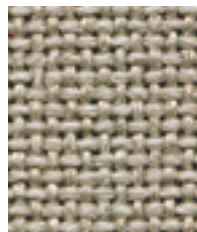
**Beltane**  
EJ193



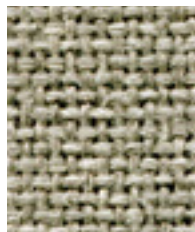
**Lerwick**  
EJ194



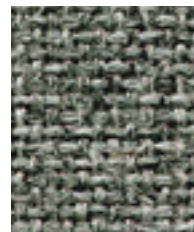
**Lomond**  
EJ192



**Shetland**  
EJ191



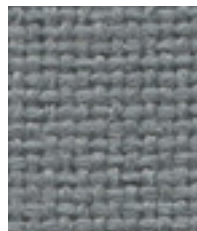
**Spray**  
EJ033



**Portland**  
EJ016



**Merrick**  
EJ048



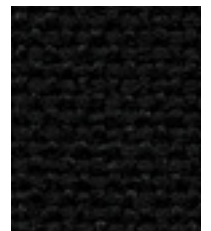
**Chaucer**  
EJ172



**Hillswick**  
EJ190



**Lead**  
EJ104



**Black**  
EJ138



Panels



SBI



Acoustic



Bleach cleanable



Year guarantee

Cara is a plain weave panel fabric available in a wide selection of commercial colourways. One of our most popular vertical surface fabrics, Cara is used extensively on desk screens, wallsides and on pin boards.

This fabric is largely acoustically transparent and as such is ideal to be used as a decorative facing for sound absorbing boards.



## Technical information

### UK

#### Composition

100% Polypropylene

#### Environment

Certified to the EU Ecolabel  
Certified to Indoor Advantage™ Gold

#### Width

170 cm minimum

#### Weight

220 g/m<sup>2</sup> ±5% (374 g/lin.m ±5%)

#### Flammability

EN 1021-1 (cigarette)  
BS 476 Part 7 Class 1 (Adhered)  
EN 13501-1 (SBI) Adhered Class B, s2, d0  
*Note: Flammability performance is dependent on components used. Our certificates show what substrates have been used in our tests. For composite tests customers must ensure their complete furniture meets the necessary standards.*

#### Light Fastness

6 (ISO 105 - B02)

#### Fastness to Rubbing

Wet: 4, Dry: 4 (ISO 105 - X12)

#### Bleach Cleanable

ISO 105 E03 colour change 4 for dilution factor 1:4 chlorine solution

#### Acoustic Properties

Acoustically transparent. Acoustic graphs available upon request

#### Cleaning

Vacuum regularly. Wipe with a damp cloth using a proprietary upholstery shampoo/soap. For deeper cleaning use bleach or alcohol. Full details can be found in our cleaning and disinfection guide.

Please note that seam performance is dependent on seam construction and needle and thread type. We recommend that appropriate sewing advice be taken.

Batch to batch variations in shade may occur within commercial tolerances. We reserve the right to alter technical specifications without notice. The Unregistered Design Rights and the Copyright in all designs are the exclusive property of Camira Fabrics Limited.

### D

#### Zusammensetzung

100% Polypropylen

#### Umweltfreundlich

Nach Zertifikat EU Ecolabel  
Nach Zertifikat Indoor Advantage™ Gold

#### Breite

170 cm nutzbare Breite

#### Gewicht

220 g/m<sup>2</sup> ±5% (374 g/lfd.m ±5%)

#### Feuersicherung

EN 1021 - 1 (Zigarettentest)  
BS 476 Part 7 Class 1 (Adhered)  
EN 13501-1 (SBI) Adhered Class B, s2, d0  
*Bemerkung: Die Schwerentflammbarkeit hängt von den verwendeten Komponenten ab. Unsere Zertifikate zeigen auf, welche Substrate bei den Tests verwendet wurden. Bei Verbundtests muss sichergestellt sein, daß das komplette Möbel den entsprechenden Standards entspricht.*

#### Lichtechtheit

6 (ISO 105 - B02)

#### Reibechtheit

Nass: 4, Trocken: 4 (ISO 105 - X12)

#### Chlorbleiche-Beständig

ISO 105 E03 Farbbänderung 4 bei einer 1:4 verdünnten Chlor-Lösung

#### Akustische Eigenschaften

Akustisch durchlässig. Akustische Messwerte auf Anfrage

#### Reinigung

Regelmässig absaugen. Mit einem feuchten Tuch abwischen oder mit einem geeigneten Polstershampoo behandeln. Für eine Grundreinigung bitte Chlorbleiche oder Alkohol verwenden. Weitere Informationen finden Sie in unserem Leitfaden zur Reinigung und Desinfektion.

Eine optimale Nahtausreissfestigkeit hängt von der Nahtfahne, der verwendeten Nadel und dem Näh-Garn ab. Wir empfehlen daher Nähversuche durchzuführen.

Handelsübliche Farbabweichungen können auftreten und berechtigen nicht zur Reklamation. Wir behalten uns die Änderung technischer Spezifikationen vor. Die registrierten und nicht registrierten Urheberrechte der Dessinierungen sind ausschliessliches Eigentum der Camira Fabrics Limited.

### F

#### Composition

100% Polypropylène

#### Écologique

Avec le certificat EU Ecolabel  
Certifié à Indoor Advantage™ Gold

#### Largeur

170 cm minimum

#### Poids

220 g/m<sup>2</sup> ±5% (374 g/m.l ±5%)

#### Flammabilité

EN 1021 - 1 (cigarette)  
BS 476 Part 7 Class 1 (Adhered)  
EN 13501-1 (SBI) Adhered Class B, s2, d0  
*Note: La performance de flammabilité dépend des composantes utilisées. Nos certificats indiquent les substrats utilisés dans nos tests. Pour les tests composites, les clients doivent s'assurer que leurs meubles complets satisfont aux normes nécessaires.*

#### Solidité à la lumière

6 (ISO 105 - B02)

#### Solidité au Frottement

Mouillé: 4, Sec: 4 (ISO 105 - X12)

#### Nettoyable au javel

ISO 105 E03 changement de couleur 4 pour le facteur de dilution 1: 4 solution de chlore

#### Propriétés Acoustiques

Acoustiquement transparent. Graphiques acoustiques disponibles sur demande

#### Nettoyage

Passez l'aspirateur régulièrement. Essuyez avec un chiffon humide en utilisant un shampooing/savon pour tissus d'ameublement exclusif. Pour un nettoyage en profondeur, utilisez de la javel ou alcool. Vous trouverez tous les détails dans notre guide de nettoyage et de désinfection.

Veuillez noter que la performance du joint dépend de sa construction ainsi que de l'aiguille et du type de fil utilisés.

Une variation de couleurs peut provenir (commerciallement tolérable). Nous réservons le droit de changer les spécifications techniques sans préavis. Les Droits de Conception non-enregistrés et les droits d'auteur de tous les motifs sont la propriété exclusive de Camira Fabrics Limited.

### ES

#### Composició

100% Polipropileno

#### Ambiental

Certificado con EU Ecolabel  
Certificado de Indoor Advantage™ Gold

#### Ancho

170 cm mínimo

#### Peso

220 g/m<sup>2</sup> ±5% (374 g/lin.m ±5%)

#### Inflamabilidad

EN 1021 - 1 (cigarillo)  
BS 476 Part 7 Class 1 (Adhered)  
EN 13501-1 (SBI) Adhered Class B, s2, d0  
*Nota: El rendimiento de la inflamabilidad depende de los componentes usados. Nuestros certificados muestran qué substratos se han usado en nuestros tests. Para tests compuestos nuestros clientes deben asegurar si sus muebles cumplen la normativa al uso.*

#### Solidez a la luz

6 (ISO 105 - B02)

#### Solidez al rozamiento

Húmedo: 4, Seco: 4 (ISO 105 - X12)

#### Posibilidad lavado con Lejía

ISO 105 E03 cambio color 4 para un factor de disolución 1:4 solución cloro

#### Acústico Propiedades

Acústicamente transparente. Gráficos disponibles bajo petición

#### Limpieza

Uso aspirador regularmente. Limpiar con un trapo usando jabón y agua o producto limpieza para tapicerías. Para una limpieza más profunda use lejía o alcohol. Los detalles completos se encuentran en nuestra guía de limpieza y desinfección.

Tenga en cuenta que el rendimiento de la costura depende de la construcción de la costura, además de la aguja y del tipo de rosca. Le recomendamos que se aconsejen para coser la costura.

Las variaciones de lote a lote en la sombra se puede producir dentro de tolerancias comerciales. Nos reservamos el derecho a efectuar modificaciones técnicas sin previo aviso. Los derechos sobre los diseños no registrados y los derechos de autor en todos los diseños son propiedad exclusiva de Camira Fabrics Limited.