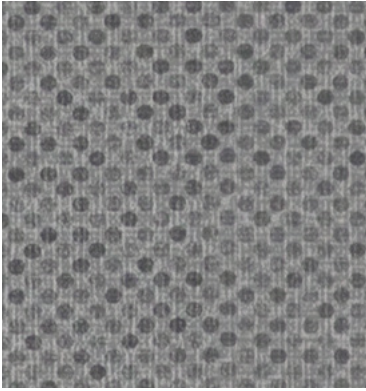


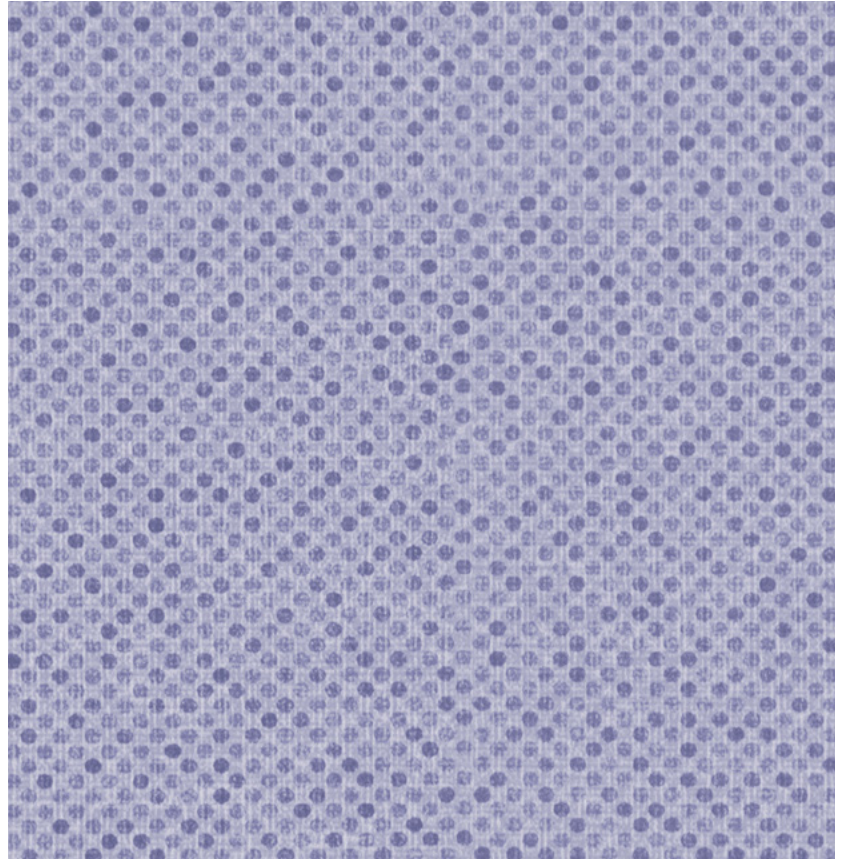
Freedom

camira

Photographic fabric scans are not color accurate. Always request actual fabric samples before ordering.



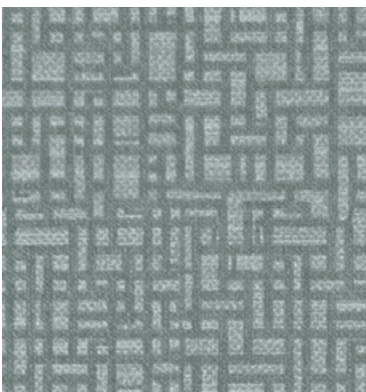
ORB - Onyx
FOB02



ORB - Moonstone
FOB01



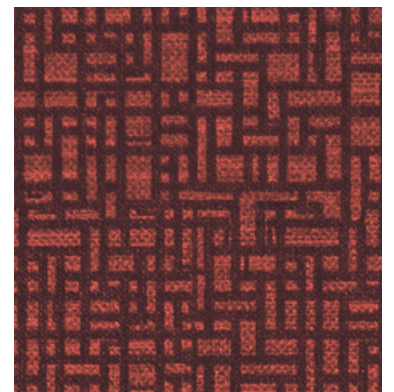
SWIRL - Steel
FSW01



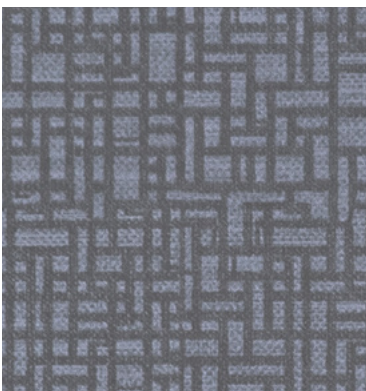
PUZZLE - Peacock
FPZ01



ORB - Dusk
FOB03



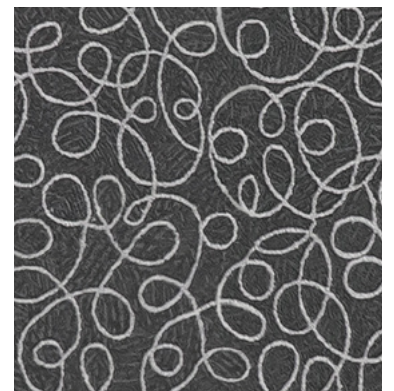
PUZZLE - Auburn
FPZ02



PUZZLE - Blueprint
FPZ03



SWIRL - Ink
FSW02



SWIRL - Coal
FSW03

Transport
seating

Year guarantee

Bringing a pop of graphic pattern and contemporary color to bus & motorcoach interiors, Freedom is a cost-effective vinyl which is guaranteed to make a style statement. Designed for the modern public transport vehicle, this bleach cleanable PVC can be wiped down to create a sanitized surface in seconds. Meeting the key North American flammability standard, Freedom is compliant to FMVSS 302 - ensuring it is both a safe and stylish upholstery option.

Technical information

EN

Composition

Surface: 100% PVC
Substrate: 100% Polyester

Width

54 inches minimum

Weight

18^{3/4} oz/sq yd ±10% (28 oz/running yd ±10%)

Topskin Thickness

6 mils

Abrasion Resistance

CFFA 1a Cotton Duck Wyzenbeek method
≥250,000 double rubs
5 year guarantee (full details available)

Flex Resistance

ASTM D2097 / CFFA-10
25,000 flexing cycles

Adhesion

Warp and Fill 4 lb/in (ASTM D751 / CFFA-3)

Tensile Strength

Warp: 85lb/ Weft: 75lb/ (ASTM D751 / CFFA-17)

Tear Strength

Warp: 20lb/ Weft: 27lb/ (ASTM D5587 / CFFA-16c)

Tack Strength

Warp: 35lb/ Weft: 30lb/ (ASTM D751 / CFFA-14)

Blocking

Class 1 (CFFA-4)

Cold Crack

-20°F (CFFA-6A)

Flammability

FMVSS 302
Note: Flammability performance is dependent on components used. Our certificates show what substrates have been used in our tests. For composite tests customers must ensure their complete furniture meets the necessary standards.

Color fastness to Crocking

AATCC-8 (Dry: 4, Wet: 4)

QUV

650 hours (CFFA-2-C1)

Anti-microbial

AATCC 147 (Anti-bacterial)
AATCC 100 (Anti-bacterial)
ASTM G21 (Anti-fungal)

Bleach Cleanable

ISO 105 E03 color change 4 for dilution factor 1:4 chlorine solution

Cleaning

W
Spot clean, using the foam only from a water-based cleaning agent, such as a mild detergent or non-solvent upholstery shampoo product.

Note: Batch to batch variations in shade may occur within commercial tolerances. We reserve the right to alter technical specifications without notice. The Unregistered Design Rights and the Copyright in all designs are the exclusive property of Camira Fabrics Limited.

F

Composition

Surface: 100% PVC
Couche Inférieure: 100% Polyestere

Largeur

54 pouces minimum

Poids

18^{3/4} oz/sq yd ±10% (28 oz/yd.lin ±10%)

Épaisseur de peau

6 mils

Résistance à l'abrasion

CFFA 1a Cotton Duck méthode Wyzenbeek
≥250,000 doubles frottements
Garantie de 5 ans (détails complets disponibles)

Résistance à la fatigue de souplesse

ASTM D2097 / CFFA-10
25,000 cycles

Adhésion

Trame et fils 4 lb/in (ASTM D751 / CFFA-3)

Résistance au traction

Trame: 85lb/ Chaîne: 75lb/ (ASTM D751 / CFFA-17)

Résistance au déchirement

Trame: 20lb/ Chaîne: 27lb/ (ASTM D5587 / CFFA-16c)

Force d'armure

Trame: 35lb/ Chaîne: 30lb/ (ASTM D751 / CFFA-14)

Blocage

Class 1 (CFFA-4)

Fissure à froid

-20°F (CFFA-6A)

Flammabilité

FMVSS 302
Note: La performance de flammabilité dépend des composantes utilisées. Nos certificats indiquent les substrats utilisés dans nos tests. Pour les tests composites, les clients doivent s'assurer que leurs meubles complets satisfont aux normes nécessaires.

Solidité des teintés face aux frottements

AATCC-8 (Sec: 4, Mouillé: 4)

QUV

650 heures (CFFA-2-C1)

Anti-microbial

AATCC 147 (Anti-bacterial)
AATCC 100 (Anti-bacterial)
ASTM G21 (Anti-fungal)

Nettoyable au javel

ISO 105 E03 changement de couleur 4 pour le facteur de dilution 1:4 solution de chlore

Nettoyage

W
Nettoyer la tâche en n'utilisant que la mousse d'un détergent à base d'eau, comme un détergent doux ou un nettoyant de tissu non-dissolvant.

Remarque: Une variation de couleurs peut provenir (commerciallement tolérable). Nous réservons le droit de changer les spécifications techniques sans préavis. Les Droits de Conception non-enregistrés et les droits d'auteur de tous les motifs sont la propriétés exclusives de Camira Fabrics Limited.

ES

Composición

Superficie: 100% PVC
Sustrato: 100% Polyester

Ancho

54 pulgadas mínimo

Peso

18^{3/4} oz/sq yd ±10% (28 oz/lin.y ±10%)

Grosor Topskin

6 mils

Resistencia a la abrasión

CFFA 1a Cotton Duck Wyzenbeek method
≥250,000 rozamientos dobles
Garantía de uso 5 años (detalles disponibles)

Resistencia Flex

ASTM D2097 / CFFA-10
25,000 ciclos de flexión

Adhesion

Trama y Urdimbre 4 lb/in (ASTM D751 / CFFA-3)

Fuerza Tension

Trama: 85lb/ Urdimbre: 75lb/ (ASTM D751 / CFFA-17)

Resistencia al desgarre

Trama: 20lb/ Urdimbre: 27lb/ (ASTM D5587 / CFFA-16c)

Fuerza Adherencia

Trama: 35lb/ Urdimbre: 30lb/ (ASTM D751 / CFFA-14)

Blocking

Class 1 (CFFA-4)

Grieta Fría

-20°F (CFFA-6A)

Inflamabilidad

FMVSS 302
Nota: El rendimiento de la inflamabilidad depende de los componentes usados. Nuestros certificados muestran qué substratos se han usado en nuestros tests. Para tests compuestos nuestros clientes deben asegurar si sus muebles cumplen la normativa al uso.

Solidez al Rozamiento

AATCC-8 (Seco: 4, Húmedo: 4)

QUV

650 horas (CFFA-2-C1)

Anti-microbial

AATCC 147 (Anti-bacterial)
AATCC 100 (Anti-bacterial)
ASTM G21 (Anti-fungal)

Posibilidad lavado con Lejía

ISO 105 E03 cambio color 4 para un factor de disolución 1:4 solución cloro

Limpeza

W
Limpeza de manchas, usando solamente la espuma de un producto de limpieza con agua, como puede ser un detergente suave o un jabón de limpieza de tapicerías sin ningún disolvente.

Nota: Las variaciones de lote a lote en la sombra se puede producir dentro de tolerancias comerciales. Nos reservamos el derecho a efectuar modificaciones técnicas sin previo aviso. Los derechos sobre los diseños no registrados y los derechos de autor en todos los diseños son propiedad exclusiva de Camira Fabrics Limited.