

Main Line Flax

camira

Main Line Flax

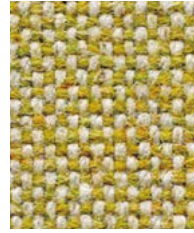
www.camirafabrics.com



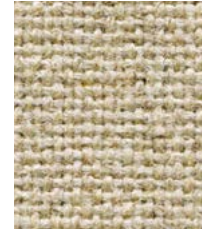
Barbican
MLF03



Lambeth
MLF08



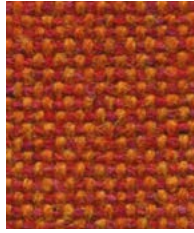
Kensington
MLF07



Upminster
MLF20



Aldgate
MLF01



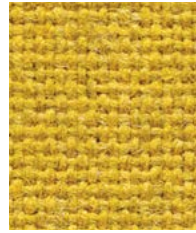
Leyton
MLF13



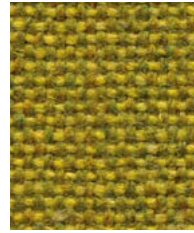
Finsbury
MLF30



Kilburn
MLF06



Tooting
MLF17



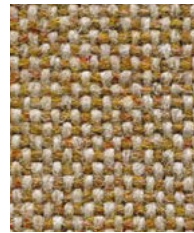
Goldhawk
MLF31



Archway
MLF02



Parsons
MLF14



Morden
MLF12



Camden
MLF26



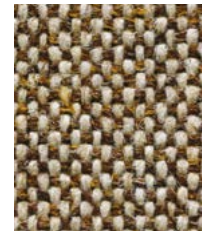
Paddington
MLF39



Wembley
MLF11



Euston
MLF04



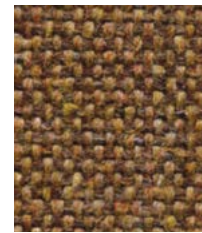
Bank
MLF23



Northfields
MLF40



Hillingdon
MLF41

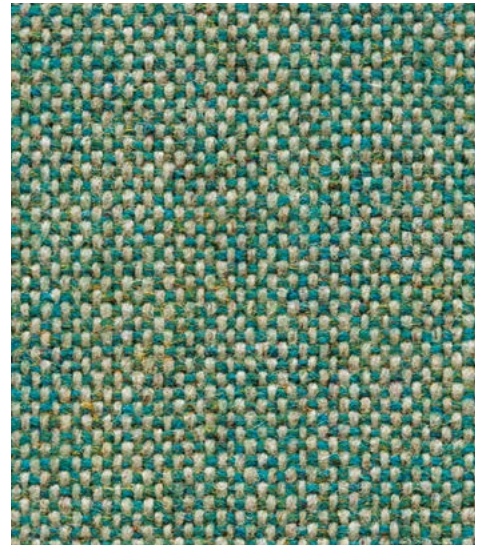


Stockwell
MLF15

Photographic fabric scans are not color accurate. Always request actual fabric samples before ordering.



Newbury
MLF10



Bayswater
MLF24



Bethnal
MLF25



Waterloo
MLF21



Charing
MLF27



Monument
MLF09



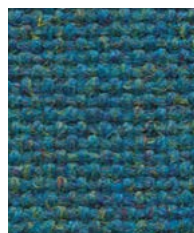
Highgate
MLF33



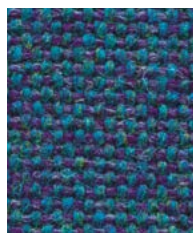
Westminster
MLF22



Tufnell
MLF18



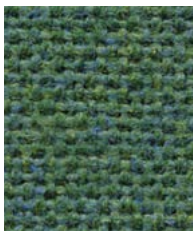
Stanmore
MLF37



Russell
MLF38



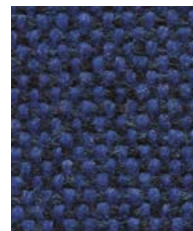
Holborn
MLF05



Farringdon
MLF29



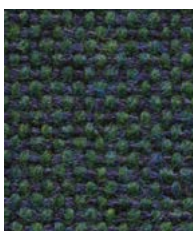
Pimlico
MLF34



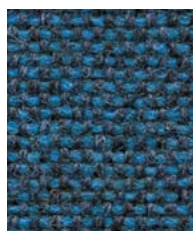
Victoria
MLF19



Temple
MLF16



Greenford
MLF32



Brompton
MLF35



Tower
MLF36



Edgware
MLF28



Task seating



Lounge seating



Panels



Environmental



Year guarantee

Main Line Flax builds on our industry leading bast fiber expertise to create a new inherently flame retardant fabric from sustainable sources. A symbol of purity, wild flax has been used in textiles for thousands of years thanks to its strong, long and smooth fibers found inside the stem of the plant. The fiber is spun into a 75-25 wool flax blend, then fiber dyed to create beautiful mixture yarns which are woven into interesting solids and cross-colors inspired by the rich tones of rare jewels.



Main Line Flax meets the ACT voluntary Performance Guidelines and is classified for Heavy Duty Upholstery.



Technical information

EN

Composition

75% Pure New Wool, 25% Flax

Environment

Certified to the EU Ecolabel
Certified to Indoor Advantage™ Gold
Rapidly renewable and compostable
Made from wool and bast fiber

Width

54 inches minimum

Weight

13 oz/sq yd $\pm 5\%$ (19^{1/4} oz/running yd $\pm 5\%$)

Abrasion Resistance*

ASTM D4157 Wyzenbeek method, Heavy Duty Upholstery
Independently certified to $\geq 100,000$ double rubs
Covered by a full and comprehensive 10 year guarantee
(full details available)

Flammability

California Technical Bulletin 117 - 2013
NFPA 260 + UFAC Class 1
BS 7176 Low Hazard
ASTM E84 Class 1 or A (Adhered)
ASTM E84 Class 2 or B (Un-adhered)
Note: Flammability performance is dependent on components used. Our certificates show what substrates have been used in our tests. For composite tests customers must ensure their complete furniture meets the necessary standards.

Color Fastness to Light

AATCC-16 (40 hours) Class 4

Color Fastness to Crocking

AATCC-8 (Dry: 4, Wet: 3)

Cleaning

W/S
Clean with a water-based cleaning agent or solvent:
Depending on the stain, you can use a dry-cleaning solvent, the foam of a mild detergent, or upholstery shampoo.

*Camira recognizes that the number of Wyzenbeek double rubs do not reflect the actual wear performance of fabrics. We're so confident in the durability of our products that we provide a robust 10 year guarantee (full details available). This product is externally certified, details of which are on our website and available from our customer services team.
Multiple factors affect fabric durability and appearance retention, including end-user application and correct maintenance. Results above 100,000 double rubs have not been shown to be a reliable indicator of increased fabric lifespan.
Batch to batch variations in shade may occur within commercial tolerances. We reserve the right to alter technical specifications without notice. The Unregistered Design Rights and the Copyright in all designs are the exclusive property of Camira Fabrics Limited.

F

Composition

75% Pure Laine Vierge, 25% Lin

Écologique

Avec le certificat EU Ecolabel
Certifié à Indoor Advantage™ Gold
Rapidement renouvelable et compostable
Fabriqué avec de la Laine et des fibres originaire de Tiges

Largeur

54 pouces minimum

Poids

13 oz/sq yd $\pm 5\%$ (19^{1/4} oz/yd.lin $\pm 5\%$)

Résistance à l'abrasion

ASTM D4157 Wyzenbeek method, Heavy Duty Upholstery
Certificat indépendant $\geq 100,000$ double frottement
Avec une garantie totale de durabilité de 10 ans
(renseignements complémentaires disponibles)

Flammabilité

California Technical Bulletin 117 - 2013
NFPA 260 + UFAC Class 1
BS 7176 Low Hazard
ASTM E84 Class 1 or A (Adhered)
ASTM E84 Class 2 or B (Un-adhered)
Note: La performance de flammabilité dépend des composantes utilisées. Nos certificats indiquent les substrats utilisés dans nos tests. Pour les tests composites, les clients doivent s'assurer que leurs meubles complets satisfont aux normes nécessaires.

Solidité à la Lumière

AATCC-16 (40 heures) Class 4

Solidité à la Crocking

AATCC-8 (Sec: 4, Mouillé: 3)

Nettoyage

W/S
Nettoyer avec un produit d'entretien à base d'eau: en fonction de la tâche, vous pouvez nettoyer à sec, à l'aide d'un détergent ou bien avec du shampooing pour meubles.

*Camira reconnaît que le nombre de Wyzenbeek double frottement ne reflète pas la performance de l'usure réelle des tissus. Nous sommes tellement confiants dans la pérennité de nos produits que nous offrons une garantie solide de 10 ans (plus de détails disponibles). Cette gamme est certifiée externe, vous pouvez d'ailleurs trouver plus de détails sur notre site internet ou en contactant un membre de notre Service Clients.
La durabilité d'un tissu et sa capacité à conserver son aspect sont affectées par divers facteurs, y compris son environnement d'installation et son entretien. Un résultat de 100 000 ou plus (Wyzenbeek double frottement) n'est pas un indicateur fiable quant à la longévité d'un tissu.
Une variation de couleurs peut provenir (commerciallement tolérable).
Nous réservons le droit de changer les spécifications techniques sans préavis. Les Droits de Conception non-enregistrés et les droits d'auteur de tous les motifs sont la propriété exclusive de Camira Fabrics Limited.

ES

Composición

75% Pura Lana Virgen, 25% Lino

Ambiental

Certificado con EU Ecolabel
Certificado de Indoor Advantage™ Gold
Rapidamente renovable y compostable
Producido con lana y fibras naturales

Ancho

54 pulgadas mínimo

Peso

13 oz/sq yd $\pm 5\%$ (19^{1/4} oz/lin.y $\pm 5\%$)

Resistencia a la abrasión

ASTM D4157 Wyzenbeek method, Heavy Duty Upholstery
independientemente del certificado de $\geq 100,000$ rozamiento doble
Con garantía de uso 10 años (más información disponible bajo consulta)

Inflamabilidad

California Technical Bulletin 117 - 2013
NFPA 260 + UFAC Class 1
BS 7176 Low Hazard
ASTM E84 Class 1 or A (Adhered)
ASTM E84 Class 2 or B (Un-adhered)
Note: El rendimiento de la inflamabilidad depende de los componentes usados. Nuestros certificados muestran qué substratos se han usado en nuestros tests. Para tests compuestos nuestros clientes deben asegurar si sus muebles cumplen la normativa al uso.

Solidez a la Luz

AATCC-16 (40 horas) Class 4

Solidez al Rozamiento

AATCC-8 (Húmedo: 4, Seco: 3)

Limpieza

W/S
Lavar con un producto de limpieza neutro o solvente: en función de la suciedad o mancha, se puede limpiar con un producto de limpieza en seco, espuma templada o producto de limpieza de sofás.

*Camira reconoce que el número de Wyzenbeek rozamiento doble no refleja el rendimiento real del desgaste de los tejidos. Estamos tan seguros de la durabilidad de nuestros tejidos que ofrecemos una garantía íntegra de 10 años (los detalles completos están disponibles). Esta gama está certificada externamente, todos los detalles están disponibles en nuestra web y en el departamento de atención al cliente.
Muchos factores afectan la durabilidad y el aspecto del tejido, incluyendo el usuario final y el mantenimiento adecuado. Por encima de 100.000 (Wyzenbeek rozamiento doble), no se ha demostrado que indique una mayor durabilidad de los tejidos.
Se reserva el derecho de modificar las especificaciones técnicas sin previo aviso.
Los derechos sobre dibujos no registrados y los derechos de autor sobre todos los dibujos son propiedad exclusiva de Camira Group Inc.