

---

**camira**

style with substance

---

[www.camirafabrics.com](http://www.camirafabrics.com)

# Patina

---



Task seating



Lounge seating



Panels



Year guarantee

---



**Lustre**  
PAT16



**Aged**  
PAT02



**Imprint**  
PAT39



**Evolved**  
PAT11



**Striated**  
PAT40



**Meander**  
PAT21



**Temper**  
PAT28



**Glisten**  
PAT25



**Bloomed**  
PAT15



**Covered**  
PAT14



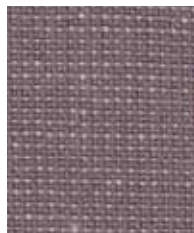
**Speckled**  
PAT41



**Glazed**  
PAT26



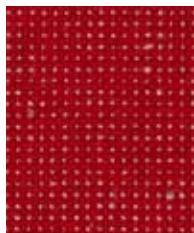
**Irregular**  
PAT09



**Engrave**  
PAT43



**Flecked**  
PAT38



**Braise**  
PAT27



**Blurred**  
PAT18



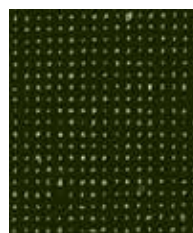
**Inlay**  
PAT37



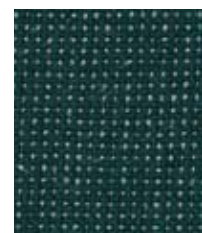
**Twisted**  
PAT36



**Lacquer**  
PAT42



**Restored**  
PAT07



**Reclaimed**  
PAT05

Photographic fabric scans are not color accurate. Always request actual fabric samples before ordering.



**Weathered**  
PAT01



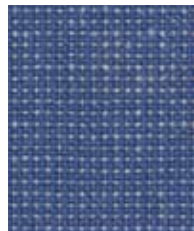
**Languish**  
PAT31



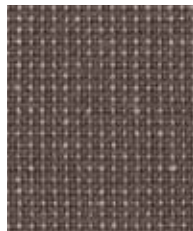
**Matured**  
PAT10



**Dusted**  
PAT13



**Salvaged**  
PAT06



**Smudged**  
PAT30



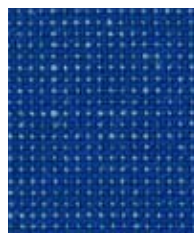
**Layered**  
PAT12



**Veneer**  
PAT04



**Anodised**  
PAT32



**Seamless**  
PAT23



**Stony**  
PAT34



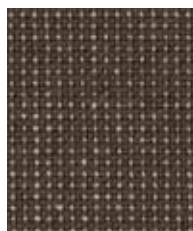
**Chiselled**  
PAT24



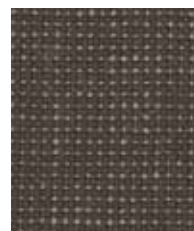
**Tessellate**  
PAT22



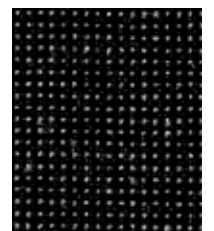
**Sheen**  
PAT17



**Timeworn**  
PAT08



**Strata**  
PAT33



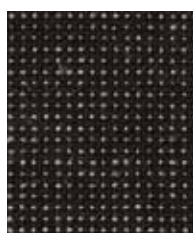
**Anneal**  
PAT35



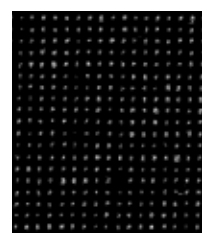
**Petrology**  
PAT29



**Rippled**  
PAT19



**Seasoned**  
PAT03



**Toughened**  
PAT20

## Patina - Product information

Only by taking a deep breath and slowing down do we become aware of our surroundings and the Pattern in Nature is revealed to us. Patina is designing with nature to achieve beauty with performance. The white flecks scattered across the surface are created by the flax content, just as the flowers would appear in the fields from which it is grown. The palette has been designed to be beautiful in its own right, but also to include new shades that breathe freshness amongst the Camira portfolio. By allowing the natural beauty of its environment to shine through, we've ensured that Patina is truly at home in its new habitat - the office.

Patina meets the ACT voluntary Performance Guidelines and is classified for Heavy Duty Upholstery.



### Contact

UK Head Office:	+44 (0)1924 490491
France/Belgium	+32 56 227 266
Germany:	+49 7031 60 84 30
Netherlands:	+31 7361 25120
Scandinavia:	+45 32 55 20 01
Turkey:	+90 850 396 6150
USA:	+1 616 288 0655
China:	+86 (0)21 6133 1812

[www.camirafabrics.com](http://www.camirafabrics.com)



## Technical information

### EN

#### Composition

69% Pure New Wool, 22% Flax, 8% Nylon, 1% Viscose  
Non metallic dyestuffs

#### Environment

Certified to the EU Ecolabel  
Contains wool and bast fiber

#### Width

54 inches minimum

#### Weight

9<sup>3/4</sup> oz/sq yd ±5% (14<sup>1/2</sup> oz/running yd ±5%)

#### Abrasion Resistance\*

ASTM D4966 Martindale method, Heavy Duty Upholstery  
Independently certified to ≥100,000 cycles  
Covered by a full and comprehensive 10 year guarantee  
(full details available)

#### Flammability

California Technical Bulletin 117 - 2013  
NFPA 260 + UFAC Class 1  
BS 7176 Medium Hazard  
ASTM E84 Class 1 or A (Adhered)  
ASTM E84 Class 2 or B (Un-adhered)  
*Note: Flammability performance is dependent on components used. Our certificates show what substrates have been used in our tests. For composite tests customers must ensure their complete furniture meets the necessary standards.*

#### Color Fastness to Light

AATCC-16 (40 hours) Class 4

#### Color Fastness to Crocking

AATCC-8 (Dry:4, Wet:3)

#### Cleaning

W/S

Clean with a water-based cleaning agent or solvent:  
Depending on the stain, you can use a dry-cleaning solvent, the foam of a mild detergent, or upholstery shampoo.

\*Camira recognizes that the number of Martindale cycles do not reflect the actual wear performance of fabrics. We're so confident in the durability of our products that we provide a robust 10 year guarantee (full details available). This product is externally certified, details of which are on our website and available from our customer services team.

Multiple factors affect fabric durability and appearance retention, including end-user application and correct maintenance. Results above 100,000 cycles have not been shown to be a reliable indicator of increased fabric lifespan.

Batch to batch variations in shade may occur within commercial tolerances. We reserve the right to alter technical specifications without notice. The Unregistered Design Rights and the Copyright in all designs are the exclusive property of Camira Fabrics Limited.

### F

#### Composition

69% Laine Virge, 22% Lin, 8% Nylon, 1% Viscose  
Teintures non métalliques

#### Écologique

Avec le certificat EU Ecolabel  
Contient de la Laine et des fibres originaire de Tiges

#### Largeur

54 pouces minimum

#### Poids

9<sup>3/4</sup> oz/sq yd ±5% (14<sup>1/2</sup> oz/rd.lin ±5%)

#### Résistance à l'abrasion\*

ASTM D4966 Martindale method, Heavy Duty Upholstery  
Certificat indépendant ≥100,000 cycles  
Avec une garantie totale de durabilité de 10 ans  
(renseignements complémentaires disponibles)

#### Flammabilité

California Technical Bulletin 117 - 2013  
NFPA 260 + UFAC Class 1  
BS 7176 Medium Hazard  
ASTM E84 Class 1 or A (Adhered)  
ASTM E84 Class 2 or B (Un-adhered)  
*Notez: La performance de flammabilité dépend des composantes utilisées. Nos certificats indiquent les substrats utilisés dans nos tests. Pour les tests composites, les clients doivent s'assurer que leurs meubles complets satisfont aux normes nécessaires.*

#### Solidité à la Lumière

AATCC-16 (40 heures) Class 4

#### Solidité à la Crocking

AATCC (Mouillé: 4, Sec: 3)

#### Nettoyage

W/S

Nettoyer avec un produit d'entretien à base d'eau: en fonction de la tâche, vous pouvez nettoyer à sec, à l'aide d'un détergent ou bien avec du shampooing pour meubles.

\*Camira reconnaît que le nombre de Martindale cycles ne reflète pas la performance de l'usure réelle des tissus. Nous sommes tellement confiants dans la pérennité de nos produits que nous offrons une garantie solide de 10 ans (plus de détails disponibles). Cette gamme est certifiée externe, vous pouvez d'ailleurs trouver plus de détails sur notre site internet ou en contactant un membre de notre Service Clients.

La durabilité d'un tissu et sa capacité à conserver son aspect sont affectées par divers facteurs, y compris son environnement d'installation et son entretien. Un résultat de 100 000 ou plus (Martindale) n'est pas un indicateur fiable quant à la longévité d'un tissu.

Une variation de couleurs peut provenir (commerciallement tolérable). Nous réservons le droit de changer les spécifications techniques sans préavis. Les Droits de Conception non-enregistrés et les droits d'auteur de tous les motifs sont la propriétés exclusives de Camira Fabrics Limited.

### ES

#### Composición

69% Lana Virgen, 22% Lino, 8% Nylon, 1% Viscosa  
Tintes no metálicos

#### Ambiental

Certificado con EU Ecolabel  
Contiene lana y fibras naturales

#### Ancho

54 pulgadas mínimo

#### Peso

9<sup>3/4</sup> oz/sq yd ±5% (14<sup>1/2</sup> oz/lin.y ±5%)

#### Resistencia a la abrasión\*

ASTM D4966 Martindale method, Heavy Duty Upholstery  
independientemente del certificado de ≥100,000 ciclos  
Con garantía total de uso 10 años  
(más información disponible bajo consulta)

#### Inflamabilidad

California Technical Bulletin 117 - 2013  
NFPA 260 + UFAC Class 1  
BS 7176 Medium Hazard  
ASTM E84 Class 1 or A (Adhered)  
ASTM E84 Class 2 or B (Un-adhered)  
*Nota: El rendimiento de la inflamabilidad depende de los componentes usados. Nuestros certificados muestran qué substratos se han usado en nuestros tests. Para tests compuestos nuestros clientes deben asegurar si sus muebles cumplen la normativa al uso.*

#### Solidez a la Luz

AATCC-16 (40 horas) Class 4

#### Solidez al Rozamiento

AATCC (Húmedo: 4, Seco: 3)

#### Limpieza

W/S

Lavar con un producto de limpieza neutro o solvente: en función de la suciedad o mancha, se puede limpiar con un producto de limpieza en seco, espuma templada o producto de limpieza de sofás.

\*Camira reconoce que el número de Martindale ciclos no refleja el rendimiento real del desgaste de los tejidos. Estamos tan seguros de la durabilidad de nuestros tejidos que ofrecemos una garantía íntegra de 10 años (los detalles completos están disponibles). Esta gama está certificada externamente, todos los detalles están disponibles en nuestra web y en el departamento de atención al cliente.

Muchos factores afectan la durabilidad y el aspecto del tejido, incluyendo el usuario final y el mantenimiento adecuado. Por encima de 100.000 ciclos de Martindale, no se ha demostrado que indique una mayor durabilidad de los tejidos.

Se reserva el derecho de modificar las especificaciones técnicas sin previo aviso. Los derechos sobre dibujos no registrados y los derechos de autor sobre todos los dibujos son propiedad exclusiva de Camira Group Inc.