



EasyFit is part of the Second Nature collection of environmental fabrics. It's manufactured by Camira Teknit, the specialist division which produces easy to assemble fabric components ready to fit to furniture. Applications include three dimensional knitted furniture covers with exciting design and patterning capabilities and a range of fitted mesh options in single or double layers for chair backs or as a suspension monofilament seat base.



Camira Fabrics Ltd, Hopton Mills, Mirfield, West Yorkshire, UK, WF14 8HE
T +44 (0)1924 490591 Sales: UK (01924) 490491, Int. +44 1924 491666
F +44 (0)1924 495605 / 498930 e-mail: info@camirafabrics.com

www.camirafabrics.com

Printed on Think, 50% recycled and 50% FSC pulp board sourced from sustainable forests; totally chlorine free



camira

EasyFit - the recycled and recyclable chair cover

• the concept

EasyFit is a completely new fabric concept for task furniture in the office market. EasyFit is a knitted fabric component for chair bases which can be used with complementary knitted or flat woven fabrics on the chair back.

The effect is to create a wow factor design statement with textured knit structure for improved surface handle and comfort.

As its name suggests, EasyFit covers are so simple to fit to the chair. They come in a conveniently sized shape common to most seat pads which slips over the chair base and is quick and easy to upholster.

EasyFit is an environmental fabric solution, made from 100% recycled polyester, benefiting from Camira's trademarked Second Nature eco-branding.



Design: Trax

• seat base design options

The EasyFit collection consists of two designs in four colourway options (blue, green, red and grey) on a black base. The designs have been inspired by random organic shapes and defined sweeping curves. Custom-made options can also be created.



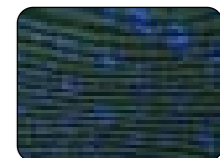
Trax



Curve



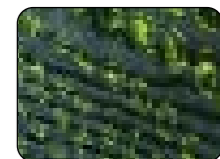
Curve Blue



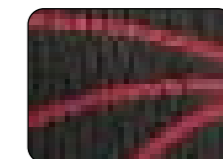
Trax Blue



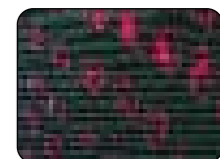
Curve Green



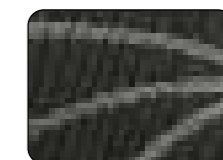
Trax Green



Curve Red



Trax Red



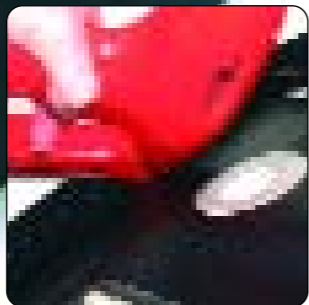
Curve Grey



Trax Grey



- assembly



Stapling



Drawstring

One of the key benefits of EasyFit is the ease with which it can be upholstered to a chair. The covers are knitted into a shape that suits the majority of chair bases. A drawstring can be sewn into the edge of the cover to aid application or, alternatively, the cover can simply be pulled taut over the seat pad and stapled onto the base. Disassembly for recycling is just as straight forward.

- coordinating seat back options

A number of Camira's conventional upholstery fabrics can be used in conjunction with EasyFit. Individual styles can be created by coordinating EasyFit on the seat pad with either Xtreme ^{plus}, Urban ^{plus} or Air Space on the chair back.





second nature recycled

- environment

EasyFit fits perfectly with the principles of sustainable design and environmental sourcing. It's part of our Second Nature brand of elite environmental fabrics:

- The covers are knitted using 100% recycled polyester, created from post industrial polyester waste extruded into new fibre.
- Knit to size covers ensure no trim waste during the upholstery process. All the fabric is utilised and no offcuts end up in landfill.
- Environmentally benevolent waste-free manufacturing process using just three basic inputs - yarn, electricity and gentle steam finishing.

